

Cadet Regulation 1-3

**Wear and Appearance of
Adult Personnel California
Cadet Corps Uniforms and
Insignia**

State of California-Military Department
Joint Force Headquarters
Camp San Luis Obispo, California
15 September 2024

UNCLASSIFIED

SUMMARY of CHANGE

CR 1-3

Wear and Appearance of Adult Personnel California Cadet Corps Uniform and Insignia

- * Updates on various details of the CACC Army Green Service Uniform, including the required nameplate
- * Changes the background and lettering colors of the CACC Utility Uniform (ACU) nametapes to black with silver lettering. Mandatory wear-in date for the black and silver nametapes is established as 1 JAN 2025.
- * Clarifies that the Army Blue Service Cap may be worn with the CSU.
- * Clarifies that Army Staff Specialist Corps branch colors of green and gold are worn with the ASU, CSU, ASU Dress variation, and Blue Mess uniform coats and hats where branch colors are worn.
- * Integration of changes to the previous version of the regulation, particularly regarding addition of the CACC Status Tabs and the Combat Service ID Badge

15 September 2024

Wear and Appearance of Adult Personnel California Cadet Corps Uniforms and Insignia

By order of the Adjutant General:

MATTHEW BEEVERS
Major General
The Adjutant General

Official:

MICHAEL J. SMITH
Colonel, CACC
Executive Officer



History. This publication is a major update to incorporate new policy provided by directive of The Adjutant General. Significant revisions are listed in the summary of change.

Summary. This regulation prescribes the authorized uniforms, insignia, accessories, accouterments and proper wear of the uniforms by all adult personnel within the California Cadet Corps.

Applicability. This regulation applies to all commandant personnel in active service with the California Cadet Corps. It applies to all units organized within the California Cadet Corps.

Proponent and exception authority. The proponent of this regulation is the Executive Officer, California Cadet Corps. The proponent has the authority to approve exceptions or waivers to this regulation that are consistent with controlling law and regulations.

The proponent may delegate this approval authority, in writing, to a field-grade HQCACC staff officer or State Projects Officer. Activities or units may request a waiver to this regulation by providing full justification that includes a full analysis of the expected benefits. All waiver requests will be endorsed by the senior commandant officer of the requesting activity or unit and forwarded through their higher headquarters to the policy proponent.

Supplementation. Supplementation of this regulation and establishment of command and local forms are prohibited without prior approval, in writing, from the Executive Officer, California Cadet Corps. Send a draft copy of each supplement to Youth Programs, California Cadet Corps, ATTN: Executive Officer, Building 1301, 10 Sonoma Avenue, Camp San Luis Obispo, CA.

Suggested improvements. Users are invited to send comments and suggested improvements in memorandum form directly to the address listed above.

Distribution. This publication is available in electronic media only and is intended for all levels of the California Cadet Corps organization and is authorized for public distribution. Printed copies of this publication may be provided, within budget limitations, at the discretion of the Joint Force Headquarters, California (HQ CACC).

Contents (Listed by paragraph and page number)

Chapter 1, Introduction

- 1-1. Authority, *page 1*
- 1-2. General, *page 1*
- 1-3. Common abbreviations, *page 2*

Chapter 2, Commandant Service Uniform (Class B)

- 2-1. General, *page 3*
- 2-2. Trousers (male) and Slacks (female), black, *page 4*
- 2-3. Shirt, white, long- and short-sleeved, *page 4*
- 2-4. Items normally worn with the Class B Black Service Uniform, *page 5*

Chapter 3, Commandant Service Uniform—Male (Class A)

- 3-1. General, *page 6*
- 3-2. Coat, black, *page 6*
- 3-3. Trousers (male) and slacks (female), black, *page 6*
- 3-4. Shirt, white, long- and short-sleeved, *page 7*
- 3-5. Items normally worn with the male Class A Black Service Uniform, *page 7*

Chapter 4, Commandant Service Uniform—Female (Class A)

- 4-1. General, *page 8*
- 4-2. Coat, black, *page 8*
- 4-3. Slacks, black, *page 9*
- 4-4. Skirt, black, *page 9*
- 4-5. Shirt, white, long- and short-sleeved, *page 9*
- 4-6. Items normally worn with the female Class A Black Service Uniform, *page 9*

Chapter 5, Commandant Utility Uniform

- 5-1. General, *page 10*
- 5-2. Coat, utility, *page 10*
- 5-3. Trousers, utility, *page 11*
- 5-4. Items normally worn with the Commandant Utility Uniform, *page 11*
- 5-5. Wear of the Cadet Utility Uniform, *page 12*

Chapter 6, Commandant Dress Uniform

- 6-1. General, *page 13*
- 6-2. Coat, blazer, *page 14*
- 6-3. Shirt/Blouse, *page 14*
- 6-4. Trousers/Slacks/Skirt, *page 14*
- 6-5. Items normally worn with the Commandant Dress Uniform, *page 14*
- 6-6. Accoutrements, *page 15*

Chapter 7, Commandant Multipurpose Uniform

- 7-1. General, *page 16*
- 7-2. Shirt, *page 16*
- 7-3. Pants, *page 16*
- 7-4. Headgear, *page 16*
- 7-5. Items normally worn with the Commandant Multipurpose Uniform (CMU), *page 16*

Chapter 8, Headgear

- 8-1. General, *page 17*
- 8-2. Beret, Black, *page 17*
- 8-3. Cap, baseball style, *page 18*
- 8-4. Cap, Utility, *page 18*
- 8-5. Drill Instructor Hat, *page 19*
- 8-6. Fleece Cap, *page 20*
- 8-7. Garrison Cap, Army Green, *page 20*
- 8-8. Service Cap, Blue, *page 21*
- 8-9. Service Cap, Heritage Green, *page 22*

Chapter 9, Uniform Accessories

- 9-1. General, *page 24*
- 9-2. Belt, black, web waist, brass tip, *page 24*
- 9-3. Boots, Utility *page 24*
- 9-4. Coats and Windbreakers, all weather, *page 24*
- 9-5. Neck tabs, female, *page 27*
- 9-6. Neckties, *page 28*
- 9-7. Shoes, *page 28*
- 9-8. Socks, *page 29*
- 9-9. Sweaters, US Army Cardigan or Pullover, *page 29*
- 9-10. Undershirts, *page 30*

Chapter 10, Wear of Insignia and Accoutrements

- 10-1. General, *page 31*
- 10-2. Eureka Buttons, *page 31*
- 10-3. Grade Insignia, Officer and Warrant Officer, *page 31*
- 10-4. Grade Insignia, Enlisted, *page 31*
- 10-5. Insignia, Branch, California Cadet Corps, *page 32*
- 10-6. Insignia, CA, *page 32*
- 10-7. Insignia, distinctive unit, California Cadet Corps, *page 33*
- 10-8. Patch, California Cadet Corps, *page 34*
- 10-9. California Flag Patch, *page 34*
- 10-10. Patch, Unit, *page 35*
- 10-11. Nameplate, *page 35*
- 10-12. CACC Status Tabs, *page 35*
- 10-13. Combat Service ID Badge, *page 36*

Chapter 11, Decorations, Awards, and Medals

- 11-1. General, *page 37*
- 11-2. Decorations, *page 37*
- 11-3. Medals, *page 38*

Appendix A, Body Composition Standards, *page 40*

LIST OF FIGURES

- 2-1 . Commandant Service Uniform (Class B), *page 3*
- 3-1. Male Commandant Service Uniform (Class A), *page 6*
- 4-1. Female Commandant Service Uniform (Class A), *page 8*
- 5-1. Commandant Utility Uniform, *page 10*
- 5-2. Wear of “CA” Insignia on Gortex Jacket, *page 11*
- 6-1. Blazon
- 6-2. CDU Nameplate
- 6-3. US/CA Lapel Pin

- 6-4. Sample Miniature Rank Lapel Pin
- 7-1. CSG Flash, *page 16*
- 7-2. Beret with flash, *page 17*
- 7-3. CACC Commissioned Officer Cap Device, *page 18*
- 7-4. CACC Enlisted Cap Device, *page 18*
- 7-5. Field Grade Officer Cap, *page 18*
- 7-6. Company Grade and Warrant Officer Cap, *page 19*
- 7-7. Noncommissioned Officer Cap, *page 19*
- 8-1. “CA” Modifications on Pullover/Cardigan Sweaters, *page 22*
- 8-2. Beret with Flash, *page 18*
- 8-2. Cardigan Sweater, *page 22*
- 8-3. Utility Cap, *page 18*
- 8-4. Drill Instructor Hat, *page 19*
- 8-5. Fleece cap (beanie), *page 20*
- 8-6. Army Green Garrison Cap, *page 20*
- 8-7. CACC Commissioned Officer Cap Device, *page 21*
- 8-8. CACC Enlisted Cap Device, *page 21*
- 8-9. Field Grade Officer Service Cap, *page 22*
- 8-10. Company Grade and Warrant Officer Service Cap, *page 22*
- 8-11. NCO Service Cap, *page 22*
- 8-12. Heritage Green Service Cap, *page 23*
- 9-1. “CA” Insignia modification on Cardigan Sweaters, Windbreakers, and Coats, *page 26*
- 9-2. Windbreaker, black, *page 26*
- 9-3. Windbreaker, heritage green, *page 26*
- 9-4. AGSU ‘Bomber’ Jacket, *page 27*
- 9-5. AGSU ‘Ike’ Jacket, *page 27*
- 9-6. All-weather coat, black or heritage green, *page 27*
- 9-7. Cardigan Sweater, *page 29*
- 9-8. Black and Green Pullover Sweaters, *page 30*
- 10-1. Commandant Branch Insignia, *page 31*
- 10-2. “CA” Insignia, Officer, *page 32*
- 10-3. “CA” Insignia, Enlisted, *page 33*
- 10-4. Wear of Insignia on the Class A coat and Ike Jacket, *page 33*
- 10-5. Distinctive Unit Insignia, DUI, *page 33*
- 10-6. California Cadet Corps Organizational Patch, *page 34*
- 10-7. California Flag Patch, *page 34*
- 10-8. Organizational Nametape, black and silver, *page 35*
- 11-1. Wearing ribbons centered or aligned to the left, *page 38*
- 11-2. Wear of full-size medals on Class A coat, *page 38*
- 11-3. Wearing of Miniature Medals on mess uniforms, male, *page 39*
- 11-4. Wearing of Miniature Medals on mess uniforms, female, *page 39*

Chapter 1

Introduction

1-1. Authority.

Section 502.2, California Military and Veteran's Code provide that members of the California Cadet Corps shall wear such uniforms as prescribed by the Adjutant General of the State of California.

1-2. General.

a. Individuals appointed as adult members of the CACC (commonly referred to as “Commandants”) are authorized to wear all dress uniforms found in DA PAM 670-1 provided body composition standards identified in Appendix A to this regulation and Army grooming standards are met. Two types of Army service uniform are authorized – the Army Green Service Uniform (AGSU) and the Army Service Uniform (ASU). CACC versions of these uniforms will be referred to as the CA Cadet Corps Army Green Service Uniform (CACC AGSU) and CA Cadet Corps Army Service Uniform (CACC ASU). CACC adults may also wear the dress variation of the ASU/CACC ASU and Army Blue Mess Uniform, to be referred to as the CACC Blue Mess Uniform (CACC BMU). When the service and dress uniforms described in DA PAM are worn under this provision by CACC personnel, they shall be worn as described in DA PAM 670-1 with the following mandatory distinctive modifications made:

- (1) The U.S. insignia will be replaced with gold “CA” insignia as described in section 10-5 of this regulation.
- (2) On the Heritage Tan shirt of the CACC AGSU, CA collar insignia will be worn on the right pocket flap of the shirt, centered between the button and the top of the pocket (alternative locations – left pocket flap, or center of the left pocket).
- (3) The distinctive maroon CACC nameplate described in Chapter 10 will be worn on the shirt and jacket of the CACC AGSU, centered left to right on the flap of the right breast pocket, and centered between the top of the button and the top of the pocket.
- (4) The U.S. Army buttons will be replaced with the California Eureka buttons in the same manner as described in section 10-2 of this regulation.
- (5) No California Cadet Corps or unit organizational patches will be worn on the CACC AGSU or CACC BMU.
- (6) The CACC DUI will be worn where specified as a distinctive unit or regimental insignia.
- (7) The blue and gold California State Military flash will be worn on the black beret in the same manner as described in section 7-2 of this regulation.
- (8) All personnel with grade of CPL or higher may wear a service cap as described in DA PAM 670-1 with the cap device shown in figure 7-3 or figure 7-4 of this regulation, and California Eureka buttons replacing the U.S. Army buttons attaching the chinstrap. The CACC AGSU or CACC BMU cap device for enlisted personnel will be the California State device shown in figure 7-4 of this regulation on the enlisted brass colored disc in the same manner as described in DA PAM 670-1.
- (9) The CACC cap insignia will be worn in place of the US Army cap insignia on the Heritage Green “crusher” service cap.
- (10) The CACC Distinctive Unit Insignia (DUI) will be worn 1/8 of an inch above and centered on the right breast pocket for both officers and enlisted (or 1/4 of an inch above unit awards or foreign badges if worn).
- (11) On any authorized Army windbreaker, a CA insignia will be worn centered on the shoulder loops above any rank insignia, and facing outwards. Officers wearing silver rank insignia may wear silver CA insignia for this purpose.
- (12) The branch insignia is as described in section 10-4 of this regulation.
- (13) The branch colors used with Army dress uniforms for officers only is Staff Specialist Corps.
- (14) Enlisted personnel will wear the CACC DUI on the epaulets of the CACC AGSU.
- (15) When wearing the mess dress uniform, the CACC DUI will be worn on the right lapel.

b. Adult members of the California Cadet Corps may wear the Commandant Service Uniforms (Class A and B) or the Commandant Multipurpose Uniform or Multipurpose Dress Uniform (CMU or CDU). These uniforms are available for any adult members without respect to weight standards. Adult members wearing the CSU (Class A or B) shall comply with the personal grooming and appearance standards as prescribed in Chapter 3 of AR 670-1.

c. Individuals who do not meet the body composition standards identified in Appendix A are authorized to wear only the Commandant Service Uniform (CSU), the Commandant Dress Uniform (CDU), the Commandant Multipurpose Uniform (CMU), and/or the Cadet Utility Uniform as prescribed in this regulation.

d. The uniforms authorized in this regulation are intended for wear when performing CACC duties. Adult members of the CACC are cautioned not to wear the uniforms described in this regulation when doing so would bring discredit to themselves, the CACC, the California Military Department, or the State of California. The uniform should not be worn to political meetings or gatherings, rallies, or public meetings, unless attending the meeting in an official CACC capacity.

1-3. Common abbreviations.

- a.* “Cadet Regulation” abbreviated as “CR”.
- b.* “California Cadet Corps” abbreviated as “CACC”.
- c.* “Army Regulation” abbreviated as “AR”.
- d.* “Department of the Army Pamphlet” abbreviated as “DA PAM”.
- e.* “California State Guard” abbreviated as “CSG”.

Chapter 2

Commandant Service Uniform (CSU - Class B)

2-1. General.

- a.* This chapter specifies the rules of wear for the Class B version of the commandant service uniform.
- b.* The Class B commandant service uniform is an authorized uniform for wear by CACC adult personnel for year-round wear by all male and female adult CACC members.

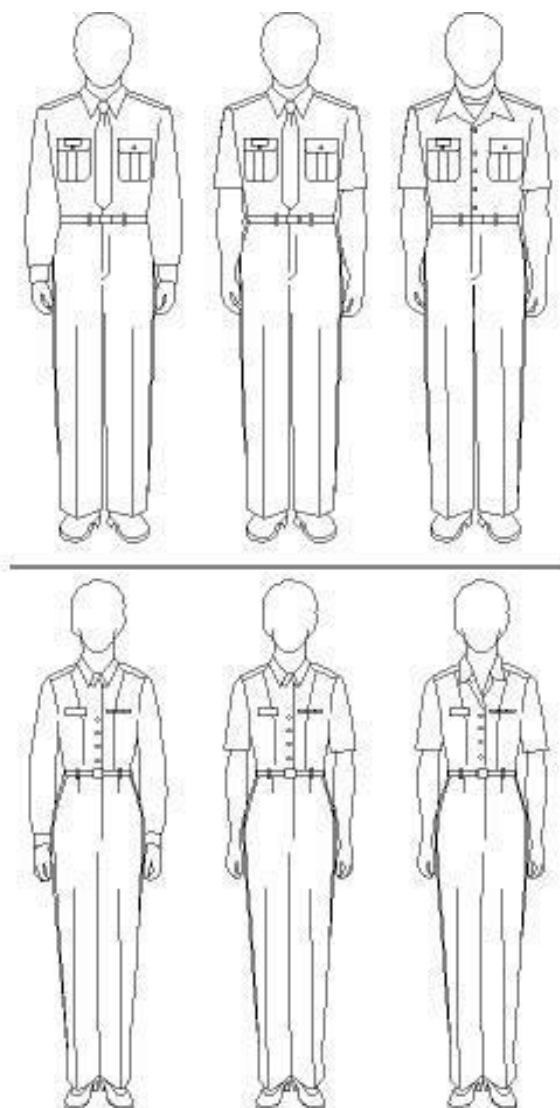


Figure 2-1: Commandant Service Uniform (Class B)
(Shown in long-sleeved, short-sleeved with tie or neck tab, and short sleeve without tie or neck tab)

2-2. Trousers (Male) and Slacks (Female), black.

a. Specifications. The design is the certified Army low-rise trouser or slack pattern for a plain-front trouser or slack. Side pockets are on the side seam. Two back pockets, slit style. Enough fabric is on the back seam to allow let out of up to 3 inches on the waist and hips. French fly. Non-roll waistband, 1-1/2 inches wide, with 3/8 inch wide belt loops, and with rubberized shirt-stay material on the inside band. For male trousers (officer, warrant officer, and enlisted in ranks CPL and above), a 1.5 inch gold trouser lace and for female slacks (officer, warrant officer, and enlisted in ranks CPL and above) a one-inch gold trouser lace (Institute of Heraldry Cable #67107) is sewn in a manner identical to that on the Army Service Uniform for NCOs and officers. Cloth: Gabardine weave, Black, 65% polyester, 35% Rayon. Color: Official shade of Navy Dress Uniform Black.

b. Manner of wear.

- (1) Trousers/slacks are to be fitted and worn at the waistline.
- (2) Trousers/slacks will be ironed with uniform creases on the front and back of each leg.
- (3) Trousers/slacks will be worn so that the front crease will reach the top of the instep, touching the top of the shoe at the shoelaces.
- (4) Trousers/slacks will be hemmed on a diagonal line to reach a point 1 inch above the top of the shoe heel in the back. The trousers will have a slight break of the crease in the front.

c. Skirt Option. Those female members wishing to do so may wear a black skirt identical in pattern to the Army Service Uniform skirt but in official color black as noted above. The skirt length shall not be more than 1 inch above or 2 inches below the middle of the kneecap. The skirt is worn without striping or belt.

2-3. Shirt, white, long- and short-sleeved.

a. Specifications. Navy or Army certified pattern (male or female styles are acceptable), White cloth 65%/35% Poly/Cotton blend. 5 oz. plain weave. Stain Armor protection. Two breast pockets with pocket flaps. Open collar forming a V-neck. Collar points measure no more than 3-1/4" with a medium spread. Buttons are 1/2" opaque-white buttons. Collar and pockets have top stitching 1/8" from the edges with 12 stitches per inch, except for the top edge of the pocket flap being 1/4" from the top edge. There are two epaulets, with pointed ends ending at the collar, slightly tapering from 2 inches to 1 7/8 +/- 1/8 inch. The epaulet must accept the standard army slide-on shoulder mark without excessive room for movement. The male and female Army Service Uniform (ASU) shirts are authorized substitutions for the specifications noted above. For females, the Army overblouse is also authorized for wear.

b. Manner of wear.

- (1) The shirt will be ironed and may be worn with military creases, as prescribed in paragraph 2-3(c).
- (2) The shirt is always worn tucked into the trousers, except when the female overblouse is worn, which may be worn untucked.
- (3) All members must wear a black necktie or neck tab when wearing the long-sleeved shirt as an outer garment.
- (4) Male members have the option of wearing a tie and female members the option of wearing a necktab when the short-sleeved shirt is worn as an outer garment or of wearing an Army black bowtie on formal occasions when directed by the Executive Officer or a Brigade Advisor. When worn with the sweater, the collar may be worn open.
- (5) If females elect to wear the male pants, they should also wear a male shirt. Mixing the gender specific items does not allow for a proper gig line. The two could be mixed while wearing the Class A jacket, but may not be mixed while wearing the Class B uniform.

(6) A crew-necked white undershirt is worn with the male uniform shirt (including by females when wearing the male shirt). A v-necked white undershirt is worn with the female uniform shirt.

c. Military creases. Military creases are optional and are made using an iron, not by other methods such as sewing or gluing creases in place. The pre-sewn ASU shirt creases are the only allowable exception to this policy.

- (1) Shirt front. Two vertical creases; one on each side of the shirt; centered on the pockets.
- (2) Shirt back. Three vertical creases; equally spaced horizontally, between the side seams of the shirt. Creases should extend from the yoke seam (horizontal seam) to the shirt tail (bottom of the shirt).
- (3) Shirt sleeves. Sleeve creases will be centered on the shoulder loop (epaulet), extending from the shoulder seam to the hem of the sleeve.

2-4. Items normally worn with the Class B Commandant Service Uniform.

- a.* Headgear.
 - (1) Beret, black (para 8-2).
 - (2) Optional service cap, black (para 8-8).
- b.* Accessories.
 - (1) Belt, brass (para 9-2).
 - (2) Coats, black, all weather (para 9-4).
 - (3) Neck tab, black, service (para 9-5).
 - (4) Necktie, four-in-hand, (or bowtie if after retreat) black, service (para 9-6).
 - (5) Shoes (para 9-7).
 - (6) Socks, dress black (para 9-8).
 - (7) Sweaters (para 9-9).
 - (8) Undershirt, white (para 9-10).
 - (9) Windbreaker or all-weather coat, black (para 9-11).
- c.* Insignia, awards, and accouterments.
 - (1) Grade insignia (paras 10-3, and 10-4).
 - (2) Distinctive unit insignia (para 10-7).
 - (3) Nameplate (para 10-11).
- d.* Decorations, awards, and medals. All decorations and awards may be worn as specified in chapter 11.

Chapter 3

Commandant Service Uniform (CSU - Male Class A)

3-1. General.

- a. This chapter specifies the rules of wear for the male Class A version of the Commandant Service Uniform.
- b. The male Class A service uniform is authorized for year-round wear by all adult male and female members.

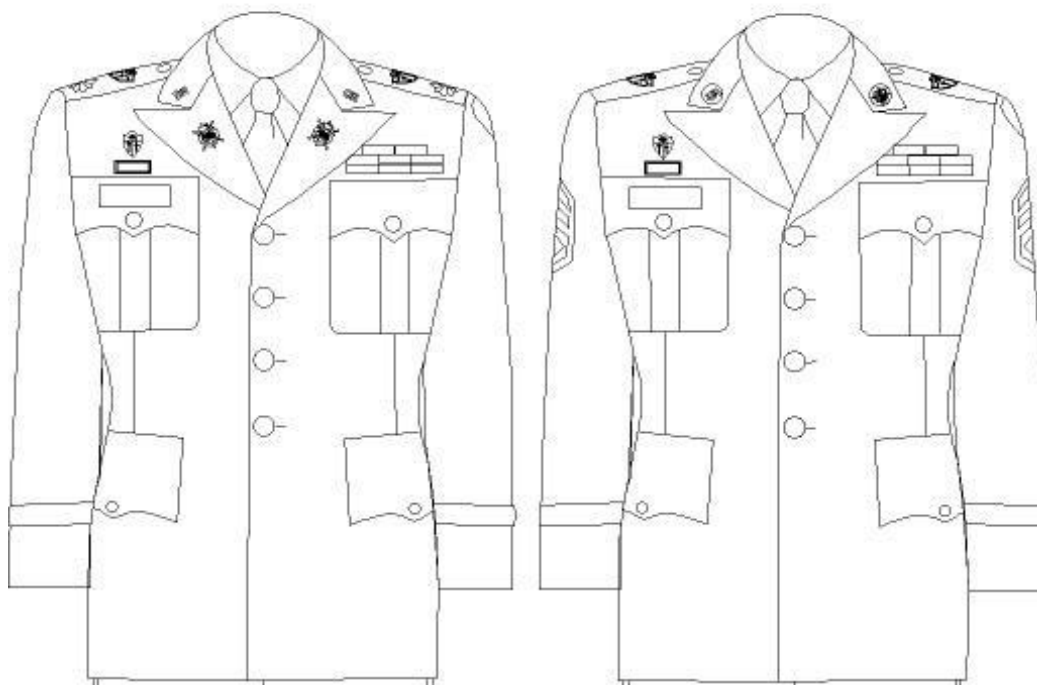


Figure 3-1: Male Commandant Service Uniform (Class A)

3-2. Coat, black.

a. Specifications. The design is the certified Army male dress blue coat pattern for a four-button, single breasted coat with notched collar and peak lapels, front and underarm darts, two piece back with vent, two-top pleated machine-sewn patch pockets with flaps, two lower inside hanging machine-sewn pockets with flaps. All seams are plain seams with no top-stitching. Epaulettes are factory-installed and will be plain with rounded full-radius ends, with no over stitching. The inside of the coat shall be lined with yoke back, fully lined sleeves, and one inside breast pocket. Officers, warrant officers, and enlisted members will wear the US Army Staff Specialist sleeve braid. Cloth: Gabardine weave, black color, 65% polyester, 35% Rayon. Color: Official shade of Navy Dress Uniform Black. Coat Buttons: Gold California "Eureka" Buttons (see Figure 10-2). Lining: Top grade Rayon. The service coat purchased for cadets may be used for this uniform.

b. Manner of wear and care.

- (1) The coat must be dry-cleaned.
- (2) Patches worn on the black uniform coat will not be creased.

3-3. Trousers, black. See paragraph 2-2.

3-4. Shirt, white, long- and short-sleeved.

a. Specifications. See paragraph 2-3.

b. Manner of wear.

(1) Members are authorized to wear the long- or short-sleeved shirt with the class A coat.

(2) Members must wear a black necktie when wearing the long- or short-sleeved shirt with the Class A coat.

When events occur after retreat, a black Army bowtie may be worn.

(3) The shirt will be ironed and worn with military creases, as prescribed in paragraph 2-3.

(4) The shirt is worn tucked into the trousers

3-5. Items normally worn with the male Class A Commandant Service Uniform.

a. Headgear.

(1) Beret, black (para 8-2).

(2) Service cap, black (para 8-8).

b. Accessories.

(1) Belt, brass (para 9-2).

(2) Buttons, California Eureka (para 10-2)

(3) Coats, black, all weather (para 9-4).

(4) Necktie, four-in-hand, black, service (para 9-6).

(5) Necktie, bow, black, dress (para 9-6).

(6) Shoes (para 9-7).

(7) Socks, dress black (para 9-8).

(8) Undershirt, white, crewneck (para 9-10).

c. Insignia, awards, and accouterments.

(1) Grade insignia (paras 10-3 and 10-4).

(2) Cadet Corps Branch insignia (officer or enlisted) (para 10-5).

(3) CA insignia (para 10-6).

(4) Distinctive unit insignia (para 10-7).

(5) California Cadet Corps patch (para 10-8).

(6) Unit patch (para 10-10).

(7) Nameplate (para 10-11).

(8) Combat Service ID Badge (para 10-13).

d. Decorations, awards, and medals: All decorations and awards may be worn as specified in chapter 11.

Chapter 4

Commandant Service Uniform—Female (Class A)

4-1. General.

- a. This chapter specifies the rules of wear for the female Class A version of the commandant service uniform.
- b. The female class A commandant service uniform is authorized for year-round wear by all female adult members. While female CACC adults may also choose to wear the male CSU, the two may not be mixed together. An individual must wear either a male coat and pants or a female coat and pants/skirt. If there is no choice, the jacket and pants may be mixed, but not the pants and shirt, which must be either all male or all female versions.

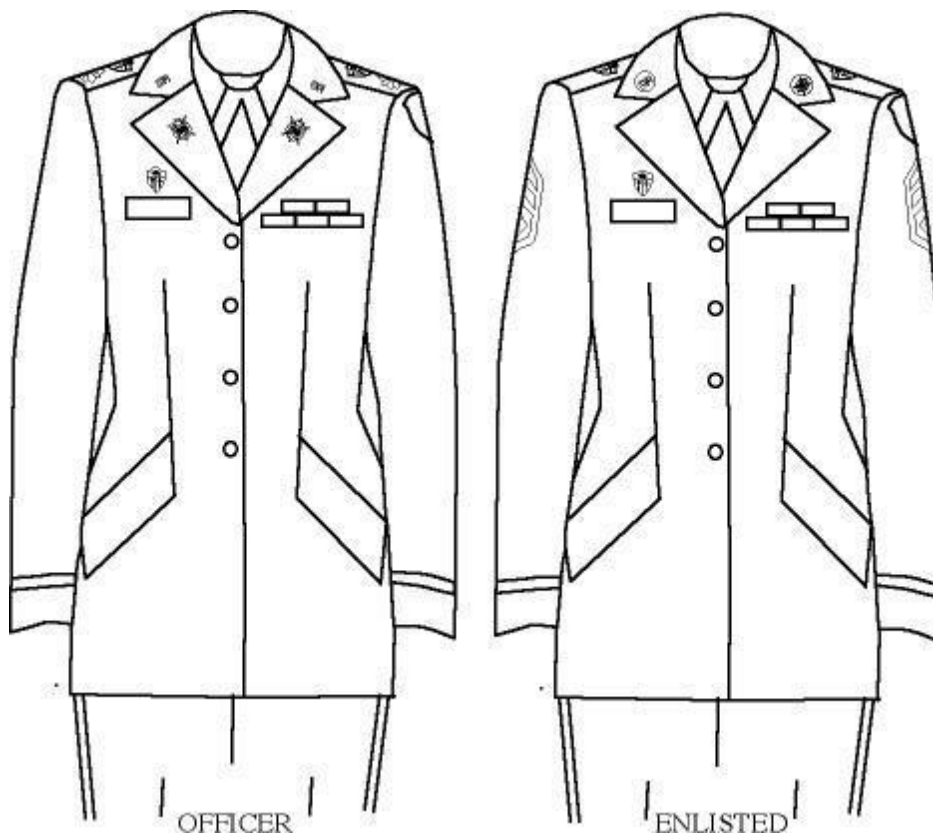


Figure 4-1: Female Commandant Service Uniform (Class A)

4-2. Coat, black.

- a. Specifications. The design is the certified Army female dress blue coat pattern for a four-button, single breasted hip-length coat with notched collar and lapels, and two slanted flap front pockets. All seams are plain seams with no top-stitching. Epaulettes are factory-installed and will be plain with rounded full-radius ends, with no over stitching. The inside of the coat shall be 3/8 lined with yoke back, fully lined sleeves, and one inside breast pocket. Officers and warrant officers will wear US Army Staff Specialist sleeve braid (green and gold). Cloth: Gabardine weave, Black color, 65% polyester, 35% Rayon. Color: Official shade of Navy Dress Uniform Black. Coat Buttons: Gold California "Eureka" Buttons. Lining: Top grade Rayon. Service coats purchased for cadets (if female coats are purchased) may be used for this uniform.

c. Manner of wear and care.

- (1) The coat must be dry-cleaned.
- (2) Patches worn on the black uniform coat will not be creased.

4-3. Slacks, black.

Females may opt to wear black slacks identical in design to the Army Service Uniform slacks in the California Cadet Corps black variation as noted in specifications elsewhere in this regulation. Slacks are considered an optional item and are not provided by the HQCACC.

4-4. Skirt, black.

Females may opt to wear a black skirt, identical in design to the Army Service Uniform skirt in the California Cadet Corps black variation cloth and color. The skirt length shall not be more than 1 inch above or 2 inches below the middle of the kneecap. The skirt is worn without striping or belt.

4-5. Shirt, white, long- and short-sleeved (male and female versions).

- a. Specifications. See paragraph 2-3.
- b. Manner of wear. See paragraph 2-3.

4-6. Items normally worn with the female Class A Commandant Service Uniform.

- a. Headgear.
 - (1) Beret, black (para 8-2).
 - (2) Service cap, black (para 8-8).
- b. Accessories.
 - (1) Belt, brass (para 9-2).
 - (2) Buttons, California (para 10-2).
 - (3) Coats, black, all weather (para 9-4).
 - (4) Neck tab, black, service (para 9-5).
 - (5) Neck tab, black, dress (para 9-5).
 - (6) Shoes (para 9-7).
 - (7) Socks, dress black (para 9-8).
 - (8) Undershirt, white (para 9-10).
- c. Insignia, awards, and accouterments.
 - (1) Grade insignia (paras 10-3 and 10-4).
 - (2) Cadet Corps Branch insignia (officer or enlisted) (para 10-5).
 - (3) CA insignia (para 10-6).
 - (4) Distinctive unit insignia (para 10-7).
 - (5) California Cadet Corps patch (para 10-8).
 - (6) Unit patch (para 10-10).
 - (7) Nameplate (para 10-11).
 - (8) Combat Service ID Badge (para 10-13).
- d. Decorations, awards, and medals: All decorations and awards may be worn as specified in chapter 11.

Chapter 5

Commandant Utility Uniform

5-1. General.

- a.* This chapter specifies the rules of wear for the commandant utility uniform, commonly known as the current issue Army Combat Uniform (ACU) as described in DA PAM 670-1. It uses the Operational Camouflage Pattern (OCP) material.
- b.* CACC Adults may also wear the Cadet Utility Uniform when in field conditions, regardless of height/weight status.
- c.* The commandant utility uniform is authorized for year-round wear by male and female adult personnel who meet the body composition standards identified in Appendix A to this regulation, and is of a unisex design.
- d.* The commandant utility uniform is also commonly referred to as the Class C uniform.
- e.* The ACU (coat and cap) will be worn with black nametapes with silver lettering, mandatory by 1 JAN 2025.



Figure 5-1: Army Combat Uniform Components

5-2. Coat, utility.

- a. Specifications.* The coat is a single-breasted "bush type" design with a collar and two patch bellows-type pockets with flaps. The coat has a straight-cut bottom and cuffed sleeves with reinforcement patches at the elbows. The utility coat is identical in design to the U.S. Army Combat Uniform (ACU) coat.
- b. Manner of wear.*
 - (1) The utility uniform is designed to fit loosely; alterations to make them fit snugly are not authorized. A tight fit reduces the airflow needed for ventilation and cooling.
 - (2) The coat is worn outside the trousers. The coat will not extend below the top of the cargo pocket on the pants and will not be higher than the bottom of the opening of the side pocket on the pants.
 - (3) All pockets are worn buttoned/closed, except when accessing the pocket.
 - (4) Sleeves can only be rolled at school site or in garrison, and whether the camouflage is exposed or rolled inside out, the sleeves must be rolled neatly above the elbow, but no more than three inches above the

elbow. During field training, the OIC/NCOIC may authorize wearers to cuff their ACU sleeves one or two times, either inside or out.

(5) Nametapes and rank may be sewn on the coat, but all three must either be sewn or affixed with Velcro. This does not apply to the nametape on the back of the cap, which may be affixed differently from that on the coat. Badges may be sewn or pinned on the coat.

5-3. Trousers, utility.

a. Specifications. The trousers have four standard type pockets, two leg bellows-type pockets, and reinforcement patches at the knees and buttocks. The trousers have a buttonhole fly with protective flap and leg- hem draw cords. The utility trousers are identical in design to the U.S. Army Combat Uniform (ACU).

b. Manner of wear.

(1) Utility trousers are to be worn at the waistline, with a belt.

(2) Members will wear the trousers bloused, using the draw cords or blousing bands, if the trousers are not tucked into the boots.

(3) Members will not wrap the trouser leg around the leg tightly enough to present a “pegged” appearance.

(4) Members will not blouse the boots so that the trouser leg extends down to the ankle area.

(5) When bloused, the trousers should not extend below the third eyelet from the top of the boot.

(6) All pockets are worn buttoned/closed, except when accessing the pocket.

5-4. Items normally worn with the commandant utility uniform.

a. Headgear.

(1) Cap, utility (para 8-3).

(2) Nametape, black with silver lettering (para 10-11)

b. Accessories.

(1) Belt, utility (See DA PAM 670-1).

(2) Boots, combat, leather, tan/sand (for UCP) or coyote brown (for OCP). (See DA PAM 670-1).

(3) Socks, cushion sole (para 9-8).

(4) Undershirt, crewneck, coyote brown (see para 9-10).

(5) Jacket, fleece, ACU

(6) Field Jacket, Gortex, ECWCS, ACU pattern (See DA PAM 670-1). When the Gortex jacket is worn, the subdued “CA” insignia will be worn with rank insignia as indicated in figure 5-2 below. As CA devices are only available in gold and silver colors, you must paint the CA insignia with flat black paint before affixing it to the uniform.



Figure 5-2, wear of grade insignia and CA insignia on ECWCS parka front tab

c. Insignia, awards, and accouterments.

(1) Grade insignia, subdued (paras 10-3 and 10-4). Subdued pin-on or sewn-on may be worn with patrol cap, chest subdued insignia shall be sewn-on or Velcro only.

(2) California Cadet Corps and unit patches, subdued (paras 10-8 and 10-10).

(3) CA flag, Velcro, full color, to be worn on the top right pocket flap on the right arm (para 10-9).

(4) Nametapes. A nametape embroidered with the member's last name in silver block letters on a black fabric background will be worn in the same manner as specified in DA PAM 670-1. An embroidered nametape with the organizational name CA CADET CORPS in silver block letters on a black fabric background shall be worn in lieu of the US ARMY nametape in the same manner as specified in DA PAM 670-1. Wear-in date for the changes in nametapes is 1 Jan 2025. Nametapes on OCP material are not authorized after that date.

d. Decorations, awards, and medals. Only skill/qualification badges outlined in DA PAM 670-1 or CSG Reg 670-1 (including MEMS badges) are authorized for wear on the CACC adult utility uniform.

5-5 Wear of the Cadet Utility Uniform

a. Adult members may wear the Cadet Utility Uniform when in field conditions (regardless of meeting height/weight standards). Personal grooming requirements as outlined in DA Pam 670-1 chapter 3 still apply.

b. The uniform must fully comply with all aspects of CR 1-8, with only the following modifications for adult wear:

(1) When worn with the Coyote Brown Cadet Utility Uniform, the US Army-style subdued pin-on ranks will be worn against a plain background Velcro tab which matches the color and pattern of the uniform blouse.

(2) The uniform will be worn with a black CACC baseball style cap when outdoors (para 8-3).

(3) When worn with the Coyote Brown Cadet Utility Uniform, the nametape and CA CADET CORPS tape will be black cloth or webbing nametape with Velcro backing, with the individual's last name embroidered in all capital silver color letters (paragraph 10-11).

Chapter 6

Commandant Dress Uniform

6-1 General.

a. This paragraph pertains to both the Commandant Dress Uniform (CDU) and Commandant Multipurpose Uniform (CMU) covered in chapters 6 and 7.

b. The Commandant Dress and Multipurpose Uniforms (CDU and CMU) are authorized for wear by all CACC adult personnel. These uniforms serve as non-military options for commandants in primarily civilian settings (such as schools), and for commandants who do not meet the height/weight or grooming standards required to wear a military style uniform such as the Army uniform, the Commandant Service Uniform, or the Utility Uniform.

(1) The Commandant Multipurpose Uniform (CMU) is intended to serve as both a utility and business casual uniform.

(2) The Commandant Dress Uniform (CDU) is intended to serve as a service or dress uniform.

c. Grooming and appearance standards. As these are uniforms and therefore representative of the organization, wearers are expected to present a professional appearance which reflects positively on the organization and models a professional appearance for the Cadets that these adult leaders mentor and serve.

(1) Facial hair may be worn with these uniforms provided that it is neatly groomed and presents a professional appearance. Sideburns, mustaches, and beards should be neatly trimmed.

(a) A fully grown in, well-maintained mustache, beard, or goatee is permitted. Facial hair must be neatly trimmed and may not present an unkempt appearance. Extreme styles are prohibited.

(b) All facial hair (beards, goatees and mustaches) must create an overall neat, polished and professional look.

(c) All facial hair must be groomed and neatly trimmed.

(d) Mustaches may extend below the corners of the mouth to meet with the facial beard. Shaping the mustache or beard to a particular style is not permitted.

(e) Members without a mustache, beard, or goatee are expected to be clean-shaven.

(2) Hair. Hair must be clean, well-groomed and neat. If dyed, will look like natural hair color. If wigs or hairpieces are worn, they should be of good quality and fit properly. Hair will not touch the eyebrows when groomed.

(3) Nail Polish. Male members are not authorized to wear nail polish. If worn by females, nail polish will be a single color that does not distinctly contrast with the female member's complexion, detract from the uniform, or be extreme colors. Some examples of extreme colors include, but are not limited to, purple, gold, blue, black, bright (fire engine) red and florescent colors. Do not apply designs to nails or apply two-tone or multi-tone colors; however, white-tip French manicures are authorized.

(4) Fingernails must not be excessive in length and must be clean and well-groomed. Fingernails must not interfere with the performance of assigned duties.

(5) Cosmetics. Male members are not authorized to wear cosmetics with the CMU. Female members may wear cosmetics; however, if worn, they will be conservative (moderate, being within reasonable limits; not excessive or extreme) and in good taste. Female members will not wear shades of lipstick that distinctly contrast with their complexion, that detract from the uniform, or that are extreme colors. Some examples of extreme colors include but are not limited to, purple, gold, blue, black, bright (fire-engine) red, and fluorescent colors.

(6) Jewelry will be plain and conservative (moderate, being within reasonable limits; not excessive or extreme) as determined by the Brigade Advisor or HQCACC.

(a) Earrings. Males may not wear earrings. Females may wear small (not exceeding 6 mm in diameter) spherical, conservative (moderate, being within reasonable limits; not excessive or extreme) round white diamond, gold, white pearl, or silver earrings as a set with CDU. If a member has multiple holes, only one set of earrings are authorized to be worn in uniform and will be worn in the lower earlobes. Earrings will match and fit tightly without extending below the earlobe unless the piece extending is the connecting band on clip earrings.

(b) Bracelets. Visible ankle bracelets are not authorized. The wear of bracelets as jewelry is not authorized with the CMU. Medical alert/identification bracelets are authorized; however, if worn, they will be conservative (moderate, being within reasonable limits; not excessive or extreme) (which is defined as plain, not drawing inappropriate attention or faddish). Bracelets espousing support for cause, philosophy, individual or group are not authorized (Exception: Traditional metal POW/MIA/KIA bracelets, which come in colors besides silver, bronze, or gold, remain authorized).

(c) Rings. Members may wear a total of no more than three rings; wedding sets count as one ring when worn as a set. Rings will be worn at the base of the finger, and will not be worn on the thumb.

(d) Necklaces. Will not be visible at any time. If worn, will be concealed under a collar or undershirt.

(e) Jewelry that is permanently affixed to the body will be covered with neutral colored tape or bandage.

(7) Tattoos/Brands/Body Markings.

(a) For purposes of this regulation, a tattoo is defined as a picture, design, or marking made on the skin or other areas of the body by staining it with an indelible dye, or by any other method, including pictures, designs, or markings only detectible or visible under certain conditions (such as ultraviolet or invisible ink tattoos). A brand is defined as a picture, design, or other marking that is burned into the skin or other areas of the body. Body markings are pictures, designs, or other markings as a result of using means other than burning to permanently scar or mark the skin.

(b) Tattoos/Brands/Body Markings (Inappropriate Contents or Excessive). Excessive tattoos/brands/body markings will not be exposed or visible (includes visible through the uniform) while wearing any/all uniform combination(s). This includes any combination of short sleeve, long sleeve, IAW AR 670-1 section 3-3 (a-c). Members with tattoos/brands/body markings that tend to bring discredit upon the CACC or CMD must ensure that these are not visible when in uniform.

(8) Body Piercing/Ornamentation.

(a) Body Piercing/Ornamentation. With the exception of earrings for women [see section 6-1(b)(6)(a)] all members are prohibited from attaching, affixing, or displaying objects, articles, jewelry or ornamentation to or through the ear, nose, tongue, tooth/teeth, eyebrows, lips, or any exposed body part (includes visible through the uniform or clothing).

(b) Dental ornamentation: Teeth, whether natural, capped, or veneered, will not be ornamented with designs, jewels, initials, etc. The use of yellow gold, white gold, or platinum caps (permanent or temporary) merely to add ornamentation to the teeth and not required by dental/medical necessity (such as braces) is prohibited.

(c) Body Alteration/Modification. Intentional alterations and/or modifications to a member's body that result in a visible, physical effect that disfigures, deforms or otherwise detracts from a professional image are prohibited. Examples of prohibited conduct include, but are not limited to, tongue splitting or forking, tooth filing, acquiring visible, disfiguring skin implants, and gouging (piercing holes large enough to permit light to shine through.)

6-2 Coat, blazer.

a. The black "blazer" style coat will be worn with the CDU.

b. The blazer will have subdued (not shiny metallic) buttons on the front. Buttons on the sleeves are optional, but will be the same type as the front buttons (though smaller) if worn.

c. The blazer will preferably have a pocket (or mock pocket) on the left breast, but this is not required.

6-3 Shirt/Blouse.

a. The shirt/blouse will be a collared white long or short sleeve dress shirt.

b. No rank or insignia will be pinned or placed on the shirt.

c. The shirt will be worn tucked into trousers/slacks.

6-4 Trousers/Slacks/Skirt.

a. Khaki or tan dress slacks are authorized for wear. Trousers/Slacks shall not be form-fitting, and should present a professional appearance. Trousers/Slacks must be full length. "Docker" style may be worn.

b. Jeans or jean-type trousers are not authorized for wear as a part of this uniform.

c. A khaki or tan skirt may be worn with the CDU. If worn, it will be tastefully long, and will fall no higher than 3 inches above the middle of the knee.

6-5 Items normally worn with the Commandant Dress Uniform

a. No headgear is worn with the CDU.

b. Black dress shoes will be worn. Athletic shoes ("sneakers"), sandals, and open toed shoes are not authorized. Military dress shoes are acceptable (leather or plastic). Heels will be no higher than 2 inches for women.

c. Black dress socks or black or neutral colored hose will be worn.

- d.* A black belt of any plain type or style shall be worn with this uniform. If women's slacks don't have belt loops, it is acceptable not to wear a belt, but blouse will still be tucked in.
- e.* A plain black necktie or Army neck tab will be worn. The CDU is not authorized to be worn with an open collar.
- f.* A white undershirt with crew or v-neck will be worn under the shirt.
- g.* A plain black overcoat may be worn as an outer garment. The Army all weather coat (paragraph 9-11) is acceptable if worn without rank insignia.
- h.* Umbrellas are authorized in inclement weather. They will be plain black with no contrasting designs.
- i.* Plain black dress gloves may be worn. No white or other colors.

6-6 Accoutrements

- a.* A "blazon" of the California Cadet Corps distinctive unit insignia will be sewn or affixed on the coat, placed centered on the left breast pocket (or where the pocket would be if none is there). Blazons will be made available for purchase at the Cadet Store or will be sourced by the LEAD Foundation. The blazon is depicted in Figure 6-1. The blazon will be approximately 3" high by 2" across. It will be worn centered below the nameplate.
- b.* If a blazon of the CACC DUI is not available, a color CACC patch may be used.
- c.* Nameplate. A plain metal gold colored nameplate measuring ½ to 5/8 inch high by 2.5 to 3 inches wide will be worn on the top (not above) of the blazer's left breast pocket/mock pocket. If the pocket is not parallel to the ground, or if body shape or the cut of the blazer interferes, the nameplate and blazon may be placed where they look best. The nameplate will be engraved with the individual's first and last name (middle initial is optional), with only the first letter of each word capitalized. "CALIFORNIA CADET CORPS" will be engraved on the second line in all capital letters. Font will be Calibri or something similar. See Figure 6-2. Engraving may be into the metal or by laser. If by laser, lettering will be black.
- d.* Lapel Pins. An individual may wear one or two lapel pins on the left lapel of the blazer. Sample pins authorized are shown in Figures 6-2 and 6-3. If two pins are worn, they will be worn vertically, with the flag pin on top.
 - (1) USA/California crossed flags. Size may not exceed 1 inch x 1 inch.
 - (2) Miniature rank may be worn on the lapel.
 - (3) No other types of lapel pins are authorized.



Figure 6-1
Blazon



Figure 6-2
Sample nameplate



Figure 6-3
USA/CA flag lapel pin



Figure 6-4
Sample miniature rank lapel pin

Chapter 7

Commandant Multipurpose Uniform

7-1 General. See Section 6-1.

7-2 Shirt

- a.* Shirt will be a collared, polo-style shirt which is black in color and embroidered with the CACC organizational crest on the left breast. Short sleeve and long sleeve versions are authorized.
- b.* Individuals may, at their option, also embroider their rank and/or name on the right breast in gold letters which are 1/2 inch or smaller.
- c.* No rank or insignia will be pinned or placed on the shirt.
- d.* The shirt may be worn tucked into trousers or untucked. Untucked shirts must extend no lower than the bottom of the pocket, or tips of fingertips when standing relaxed.

7-3 Pants.

- a.* Khaki colored slacks, khaki colored cargo pants, and coyote brown colored pants are authorized for wear. Pants shall not be form-fitting, and should present a professional appearance. Pants must be full length.
- b.* Jeans or jean-type trousers are not authorized for wear as a part of this uniform.

7-4 Headgear.

- a.* A black baseball style cap is authorized for optional wear with the CMU, as described in para 8-3.
- b.* Non-subdued rank insignia may be worn on the cap for officer and enlisted CACC personnel.
- c.* The cap visor will be unadorned.
- d.* Embroidery of the CACC crest or unit/school logo is authorized. However, rank will not be worn affixed embroidered emblems. When rank is worn with an embroidered cap, the rank insignia shall be worn above or below the embroidery as approved by the Brigade Advisor or the Executive Officer. Embroidered caps may also be worn without rank insignia.

7-5 Items normally worn with the Commandant Multipurpose Uniform

- a.* Shoes or boots are to be black, brown or tan of any plain type or style. Athletic shoes (“sneakers”), sandals, and open toed shoes are not authorized. When worn as a business casual uniform, footwear is generally dress shoes (with slacks). When worn as a utility uniform, footwear is generally boots (with cargo pants).
- b.* This uniform may be worn with ACU boots (OCP style coyote brown or UCP style tan are both acceptable without wear out date specifically for this uniform).
- c.* When worn with ACU boots, the trousers may be worn unbloused or bloused as described in section 5-3b (2) - (5) of this regulation.
- d.* A black, brown, or tan belt of any plain type or style shall be worn with this uniform when worn tucked into trousers. The ACU utility rigger belt in sand, tan, or coyote brown color is authorized when wearing with boots and cargo pants as a utility uniform. When worn as a business casual uniform, a black dress belt will be worn (including the US Army belt and buckle). No belt is required when CMU shirt is worn untucked.
- e.* Windbreaker. See section 9-4. When worn with this uniform, the Army windbreaker is worn without any insignia or decoration.
- f.* Sweaters. Cardigan and pullover sweaters are authorized (see section 9-9). When worn with this uniform, all sweaters are worn without any insignia or decoration.
- g.* Jacket, fleece, plain, ACU style. Foliage green, coyote brown, or black are authorized for wear. When worn with this uniform, the jacket is worn without any insignia. On items that come with Velcro on the breasts or sleeves, CACC color or subdued patches and nametapes may be worn (10-8 thru 10-11).

Chapter 8

Headgear

8-1. General.

- a. This chapter lists, in alphabetical order, authorized headgear referenced in the individual uniform chapters.
- b. Headgear is a required item for the appropriate wearing of all uniforms (except the CMU).
- c. When in uniform, in general, headgear will be worn when “outdoors” and removed when “indoors”.
 - (1) “Indoors” is defined as inside of any structure with solid walls, regardless of the wall’s material or the structure’s permanence (i.e. classrooms, theaters, gymnasiums, tents, etc.)
 - (2) “Outdoors” is defined as outside of any structure defined in subparagraph 8-1c(1).
 - (3) Covered structures without solid walls (i.e. covered exterior hallways, gazebos, pavilions, etc.) are generally considered “outdoors”- unless designated as a “no hat area.”

8-2. Beret, Black.

- a. The black beret is authorized for wear with both Class A and B commandant service uniforms. All Special Forces-qualified personnel carrying career management field (CMF) 18 military occupational specialties (MOSs), to include 18A or 180A and command sergeants major (CSMs) reclassified from 18Z to OOO are authorized to wear the green beret.
- b. Specifications. The beret consists of a military-style woolen knitted outer shell (lined or unlined) with a leather sweatband, black in color. An adjusting ribbon is threaded through the binding (headband). The beret is equipped with a stiffener on the left front for the attachment of flashes and insignia.
- c. Manner of wear.
 - (1) The headband (edge binding) is worn straight across the forehead, 1 inch above the eyebrows. The flash is positioned over the left eye, and the top of the beret draped over to the right ear, not to fall below the midpoint of the ear. The ends of the adjusting ribbon will be cut off and the ribbon knot secured inside the edge binding at the back of the beret.
 - (2) The beret will be hand carried when not being worn. It will not be stored under a shirt’s epaulet.
- d. Insignia.
 - (1) All individuals will wear the CSG (California State Defense Force) distinctive flash on the beret. See figures 8-1 and 8-2 below. The flash is sewn centered on the stiffener of the beret, with non-contrasting thread.
 - (2) Commissioned officers and warrant officers will wear metal pin-on grade insignia (para 10-2) centered on the flash.
 - (3) Non-commissioned officers will wear the CACC Distinctive Unit Insignia (see figure 10-5) centered on the flash.

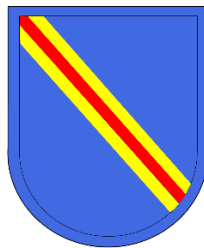


Figure 8-1: CSG Flash

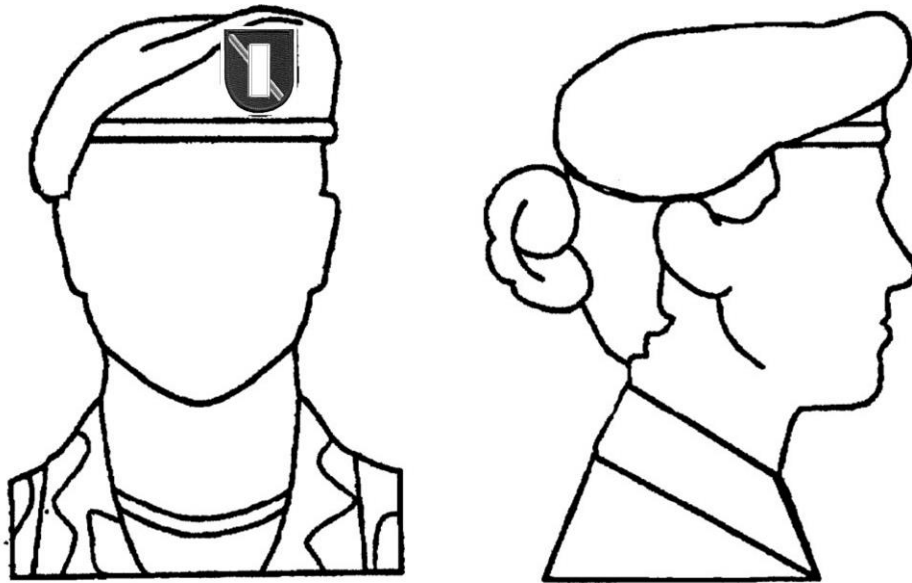


Figure 8-2 Beret with Flash

8-3. Cap, baseball style.

- a. The CACC baseball style cap is the headgear authorized for wear with the Cadet Utility Uniform when worn by adults.
- b. Specifications. The cap is black cloth with a Velcro closure in the back to size to the head. It comes in youth and adult sizes. There is an embroidered CACC logo on the front of the crown.
- d. Manner of wear.
 - (1) Members wear the CACC baseball cap straight on the head so that the cap band creates a straight line around the head, parallel to the ground.
 - (2) The CACC baseball cap will fit snugly and comfortably around the largest part of the head without distortion or excessive gaps.
 - (3) The cap is worn so that no hair is visible on the forehead beneath the cap.
 - (4) When the CACC baseball cap is not being worn, it should be carried. It should not be stored in cargo pockets, looped around the belt, or tucked into the pants.
- e. Insignia. Subdued metal pin-on or sewn-on grade insignia may be worn on the CACC baseball style cap, centered above the embroidered CACC logo.

8-4. Cap, Utility.

- a. The utility cap is the headgear authorized for wear with the commandant utility uniform. All Special Forces-qualified personnel carrying career management field (CMF) 18 military occupational specialties (MOSs), to include 18A or 180A and command sergeants major (CSMs) reclassified from 18Z to OOO are authorized to wear the green beret.
- b. Specifications. The cap has a visor, a circular top crown, a side crown with an outside crown band. Depending on construction, the cap may or may not have retractable earflaps, either of which is authorized. The utility cap is identical in design to the patrol cap worn with the Army Combat Uniform
- d. Manner of wear.
 - (1) Members wear the utility cap straight on the head so that the cap band creates a straight line around the head, parallel to the ground.
 - (2) The utility cap will fit snugly and comfortably around the largest part of the head without distortion or excessive gaps.
 - (3) The cap is worn so that no hair is visible on the forehead beneath the cap.
 - (4) If available, at their discretion, members may wear earflaps down during cold weather, except in formation when the Brigade or Regimental Advisor or Executive Officer, CACC may prescribe wear policy.
 - (5) When the utility cap is not being worn, the cap may be folded by tucking the visor inside the cap interior

and folding the rear portion of the cap around the front portion of the cap, forming a “cocoon” effect. The folded cap may then be stored in the trouser cargo pockets.

e. Insignia. Subdued metal pin-on or sewn-on grade insignia is worn on the headgear, centered both left to right, and top to bottom on the front of the cap.

f. Nametape. A nametape with the member’s last name in silver block letters on a black fabric background will be worn on the Velcro at the back of the cap. It may be optionally sewn on.

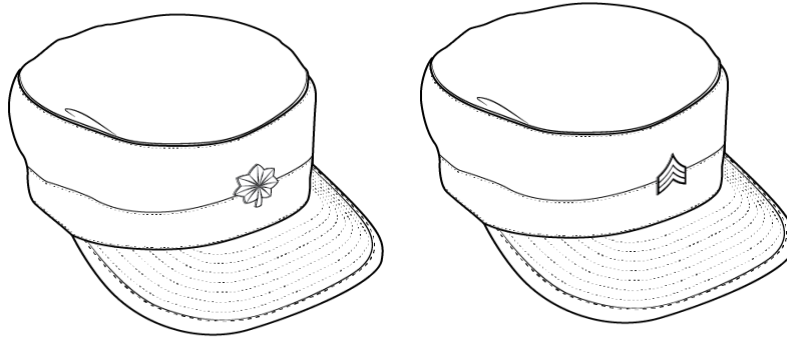


Figure 8-3 Utility Cap

8-5 Drill Instructor Hat

a. The drill instructor hat is authorized for those enlisted members who have been awarded it as the result of passing the Drill Instructor Course at the CACC Summer Encampment or were qualified as a Drill Instructor in federal military service.

(1) *Issue.* An authorized, optional purchase item not provided by the HQCACC

(2) *Description.* The hat is similar in construction to the Army drill sergeant hat. Cheaper models may be used as long as they are similar in nature to the Army hat. Hats will be the same color brown used by Army drill sergeants.

(3) *How worn.*

(a) The hat is worn with the service and utility uniforms by those authorized. Members may wear the drill instructor hat only when engaged in drill training. Drill Instructors may wear the DI hat with all Class A, B, and C uniforms.

(b) The black leather strap, issued with the hat, is worn threaded through the appropriate eyelets in the brim of the hat, so that the strap goes around the front of the hat, and the buckle is fastened and centered at the back of the wearer’s head. The running end of the strap will be to the wearer’s left. Personnel will wear the hat without noticeable tilt to the front, rear, or either side, so the brim of the hat is as nearly level in all directions as possible. No modifications in the shape of the hat are authorized. The insignia worn on the drill instructor hat is the CACC Enlisted Cap Device as depicted in figure 8-4.

b. Female DIs may wear the female or male version of the DI Hat.

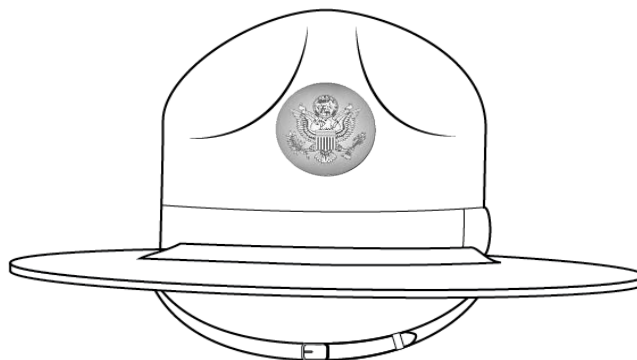


Figure 8-4: Drill Instructor Hat (optional)

8-6. Fleece Cap.

a. The fleece cap (or beanie) is authorized for optional wear by all adult CACC members with the utility and physical training uniforms when authorized by the commander.

b. Specifications. The fleece cap is a single ply, bell shape, pull-on style cap of either microfiber or knit material. Coyote brown and black colored beanies are authorized for wear. It may have an embroidered CACC emblem on the front of the cap.

c. Manner of wear.

(1) The beanie will be worn pulled down snugly on the head with the bottom edge covering the ears, but not covering the eyebrows. The bottom edge of the cap may be folded, but not rolled.



Figure 8-5: Fleece Cap (Beanie) (optional)

8-7. Garrison Cap, Army Green.

a. The garrison cap is authorized for wear by all adult members with the commandant CACC Army Green Service Uniform, Class A or B.

b. Specifications. The garrison cap is made to an approved specification for the Army.

c. Manner of wear.

(1) The garrison cap will be worn with the front vertical crease of the cap centered on the forehead in a straight line with the nose, with the front lower portion of the cap approximately 1 inch above the eyebrows (approximately the width of the first two fingers). The cap is placed on the head in such a manner that the front and rear vertical creases and the top edge of the crown form unbroken lines in silhouette, and the ridge of the cap is parallel to the ground while standing at attention. Personnel will not crush or shape the crown of the cap to form peaks at the top front or top rear of the cap. approved cap device (see figures 8-3 and 8-4 below), gold chinstrap, and State Eureka buttons.

(2) Officers will wear nonsubdued grade insignia on the garrison cap centered on the left curtain 1 inch from the front crease.

(3) Enlisted personnel will wear the CACC DUI on the left curtain 1 inch from the front crease.

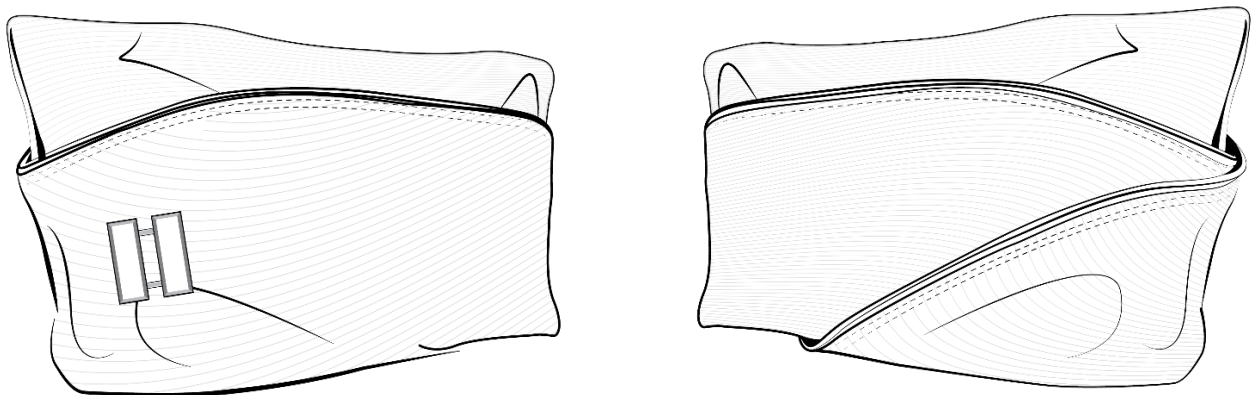


Figure 8-6: Army Green Garrison Cap

8-8. Service Cap, Army Blue.

a. An optional ASU service cap is authorized for wear by all adult members with grade of CPL or higher. The blue service cap is authorized for wear with the commandant service uniform and ASU, Class A or B.

b. Specifications. The blue service cap is of adopted design with a black visor adorned with “scrambled eggs” insignia denoting those of field grade officer rank (MAJ-COL and above, and CW3-CW5). A gold and green hat band identical in design to the Army Staff Specialist branch shall be worn on the male version when worn with the CSU. The female version has an oval-shaped crown, an all-over stitched brim rolled back and straight at front, with a plain brim (except for general officers). The female cap has a removable hatband. Field grade officers wear a hatband with “scrambled eggs” and a ¼ inch gold braid. An identical cap in black may be worn if available.

(1) Commissioned and warrant officers (male cap only). The chin strap is natural or light brown, full-grain pigskin or sheepskin, nonbleeding, with pointed ends covered with two-velum gold wire lace, synthetic metallic gold-colored lace, or a one-piece strap manufactured from anodized aluminum in 24-karat gold color.

(2) Enlisted. The chin strap (male cap only) is plain black leather matching the visor in appearance, with rounded ends. Poromeric with a leather finish is authorized.

c. Manner of wear.

(1) The blue service cap will be worn with the approved cap device (see figures 8-3 and 8-4 below), gold chinstrap, and State Eureka buttons.

(2) The service cap will be worn straight on the head so that the braid band on the cap creates a straight line around the head parallel to the ground. The visor should be positioned in such a manner so that it does not interfere with vision.

(3) No other cap devices may be worn.



Figure 8-7: CACC Commissioned Officer Cap Device

The insignia is the partial coat of arms of the United States with the seal of California superimposed on the top, 2 3/8 inches in height, gold-colored metal



Figure 8-8: CACC Enlisted Cap Device

The insignia is a plain, gold-colored disk, 1 1/2 inches in diameter, with a gold-colored metal partial coat of arms of the United States with the seal of California superimposed on the top attached to the disk

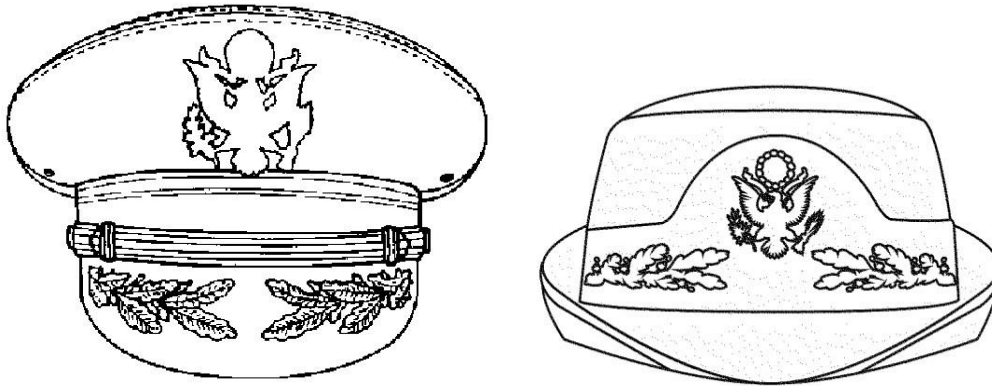


Figure 8-9 Field Grade Officer Cap (optional), Male (left image) and Female (right image)

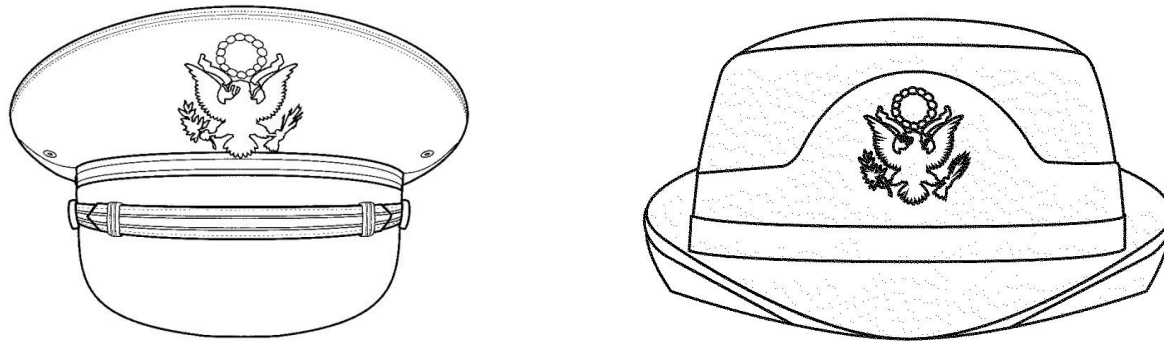


Figure 8-10: Company Grade and Warrant Officer Cap (optional)

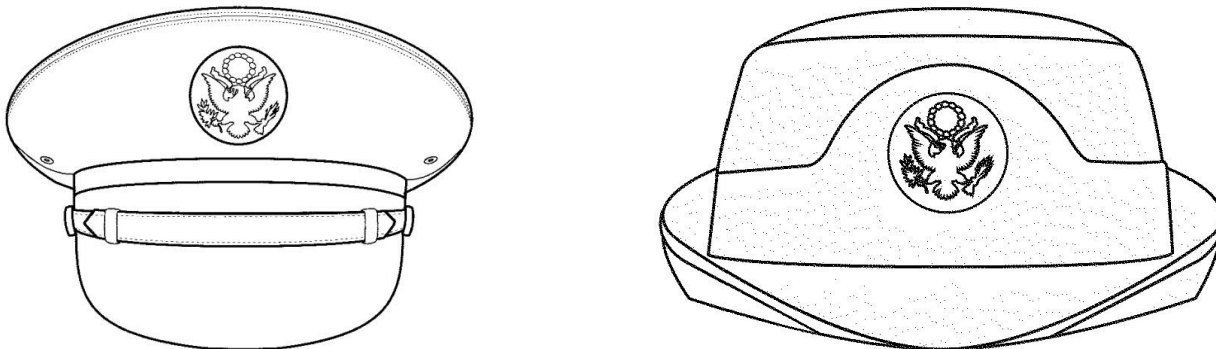


Figure 8-11 NCO member cap (optional)

8-9. Service Cap, Heritage Green.

a. An optional heritage green service cap is authorized for wear by all adult members with the Army Green Service Uniform, Class A or B.

b. See DA Pam 670-1 for a description of the heritage green service cap.

c. Manner of wear.

(1) The heritage green service cap will be worn with the approved cap device (see figures 8-6 and 8-7), in lieu of the Army cap device. Buttons will be replaced by State Eureka buttons.

(2) The service cap will be worn straight on the head so that the braid band on the cap creates a straight line around the head parallel to the ground. Personnel are authorized to wear the service cap as is or with an optional insert that makes the cap rigid.

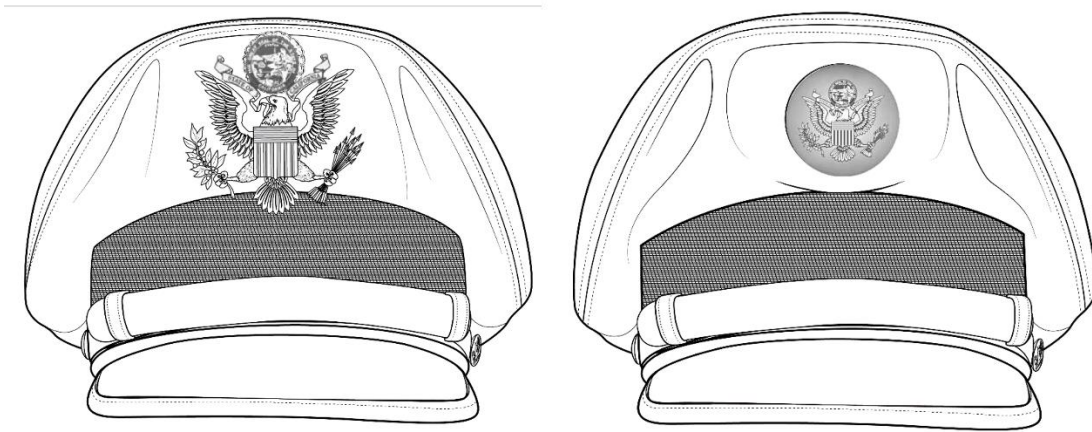


Figure 8-12 Heritage Green Service Cap (optional)

Chapter 9

Uniform Accessories

9-1. General.

This chapter lists, in alphabetical order, most uniform accessories referenced in the individual uniform chapters.

9-2. Belts.

a. Issue. Provided by the HQCACC as an item of issue.

b. Belt, web waist, brass tip. The belt is black cotton web or black woven elastic, with a brass tip. The male belt is 1-1/4 inches wide, and the female belt is 1 inch wide. The belt is identical in design to the U.S. Army brass tip belt (see DA PAM 670-1 dated 26 Jan 2021, para 20-3).

c. Buckle, belt, brass. The buckle is a plain-faced brass buckle, 1-11/16 inches long and 1-5/8 inches wide for males, and 1-1/8 inches by 2 inches for females. The buckle is identical in design to the U.S. Army brass buckle (see DA PAM 670-1 dated 26 Jan 2021, para 20-3) and is gold in finish.

d. How worn.

(1) For the web waist belt with brass tip, the buckle is attached to the end of the brass tip belt and is worn with service and dress uniforms.

(a) The brass tip belt is worn only with the brass buckle. The belt is worn so that the tipped end of the belt passes through the buckle to the wearer's left for males, and the wearer's right for females (only if wearing female slacks or skirt where the fly faces to the wearer's right).

(b) The tipped end will extend beyond the end of the buckle so that only the brass tip is visible, and no fabric portion of the belt can be seen beyond the buckle. No black part of the belt will be exposed between the brass belt tip and the buckle.

(c) The plain end (no tip) of the belt may extend beyond the keeper portion of the inside of the buckle, as long as it is not visible when worn. No more than 4 inches of belt material will be maintained behind the buckle back to provide for growth.

e. Belt, AGSU. Part of the AGSU coat.

f. Belt, rigger, tan 499. The rigger belt is worn with the attached black, open face buckle. It is worn so that the tipped end passes through the buckle to the wearer's left; the end will not extend more than 2 inches beyond the edge of the buckle. The belt's end may be neatly trimmed to ensure a proper fit.

g. Heritage walnut belt. Worn with the AGSU coat. Worn only with the open face buckle. The belt is worn so that the tipped end passes through the buckle to the wearer's left for male Soldiers and to the wearer's right for female Soldiers and will not extend more than 1 inch beyond the first pant loop.

9-3. Boots, Utility.

a. Boots, combat, coyote, leather. The Army combat boots are worn with the utility uniform.

(1) *Description.* The issue Army combat boots (hot weather) are made of coyote-colored, flesh-side out cattlehide leather and nylon duck upper, removable cushioned insert, a closed-loop speed lace system, and drainage eyelets.

(2) *Manner of wear.* The boots are laced diagonally. The color of the bootlaces will match the color of the boot, with the excess lace tucked into the top of the boot under the bloused trousers or slacks or wrapped around the top of the boot. Metal or plastic cleats and side tabs are not authorized for wear. Sewn-in or laced-in zipper or hook-and-loop inserts are not authorized.

b. Optional boots. As an option, members may wear jungle combat boots, commercial boots of a design similar to that of the Army combat boot (coyote), and the combat leather boot (black with ASU and brown with AGSU), as authorized by the commander.

9-4. Coats and Windbreakers, all weather.

a. Windbreaker, black or heritage green (unisex).

(1) *Issue.* Authorized, optional purchase items not provided by the HQCACC.

(2) Specifications. The black and heritage green windbreakers are made of polyester and wool (65/35), in Army shade 458, and have an optional Velcro-in liner. The coats have a standard collar, knit cuffs and waist. The coats will be free from any patches or embroidery. See Figures 9-1 and 9-2.

(3) A commercial plain black coat without logos may be worn with the CMU.

(4) Manner of wear.

(a) The black and heritage green windbreakers are intended to be worn as a cool weather garment over the uniform. All members may wear the appropriate windbreaker with the Class B black or Army green service uniform. The windbreakers are not authorized for wear with any other uniforms, including the Class A uniforms. The all-weather coat is intended for cold and inclement weather.

(b) Members will not wear the windbreaker in formations unless authorized by the local commander.

(c) The windbreaker will be worn zipped to at least the top of the second button from the top of the shirt.

(d) When worn with the uniform, the collar of the white uniform shirt is to be worn inside the collar of the windbreaker.

(e) Insignia of grade shall be worn on the black windbreaker as specified in paragraphs 10-2 and 10-3. Figure 9-1.

(f) Officers wear non-subdued pin-on grade insignia on the shoulder loops of this coat with "CA" insignia, with the rank and CA device evenly. See Figure 9-1.

(g) Noncommissioned officers wear shoulder marks on the shoulder loops of this coat with "CA" insignia.

(h) Enlisted personnel wear full-color grade insignia on the collars with "CA" insignia on epaulettes.

(g) Personnel may wear the windbreaker without insignia when wearing civilian clothing or the CMU.

b. Coat for CMU. A commercial plain black coat without logos may be worn with the CMU. When worn with this uniform, the Army windbreaker is worn without any insignia. On commercial jackets that come with Velcro on the breasts or sleeves, CACC color or subdued patches and nametapes may be worn (10-8 thru 10-11).

c. Leather service jacket (bomber).

(1) Issue. Authorized, optional purchase items not provided by the HQCACC.

(2) Specifications. (2) Description. The bomber is goatskin leather with a rayon, polyester, and cotton lining. It has two front horizontal patch pockets aligned with flaps that close with unexposed, reinforced snap fasteners. The patch pockets include a side entry. The bomber has a snap down flat collar, two shoulder loops, a fly front slide fastener closure with a leather thong pull, and knitted cuffs and waist. The bomber has right and left inside welt chest pockets, an inside two-section pencil pocket on the left side, and a leather hanger loop in the back neck seam of the inside collar (see Figure 9-4).

(3) Manner of wear.

(a) How worn. All personnel may wear the bomber with the Class B CACC AGSU. Personnel will not wear the bomber in formations unless authorized by the commander. Personnel will wear the bomber zipped to at least the second button down from the top of the shirt.

(b) All personnel wear shoulder marks with hook and loop on the shoulder loops, with a CA device added.

(c) Personnel may wear the bomber without insignia when wearing civilian clothing.

d. Eisenhower (Ike) jacket.

(1) Issue. Authorized, optional purchase items not provided by the HQCACC.

(2) Description. The Ike jacket is made for the Army to their specifications. (see Figure 9-5).

(3) Manner of wear.

(a) How worn. All personnel may wear the Ike jacket with the Class B CACC AGSU. Personnel will not wear the Ike jacket in formations unless authorized by the commander. Personnel will wear the Ike jacket fastened to at least the second button down from the top of the jacket.

(b) Medals and badges will be worn in accordance with AGSU guidance in chapter 22 of DA Pam 670-1. Unless directed by a commander in accordance with AR 670-1, authorized awards are worn at the option of the wearer, when not prohibited, during normal duty hours.

e. Coat all-weather.

(1) Issue. Authorized, optional purchase items not provided by the HQCACC.

(2) Specifications. The black or heritage green "trench" coats are made of polyester and wool (65/35). The coat is a six-button, double-breasted model with a belt, convertible collar that buttons at the neck, gun flap, shoulder loops, adjustable sleeve straps, welt pockets with two inside hanging pockets, and zip-out liner. The back of the coat has a yoke and center vent. See Figure 9-6.

(4) Manner of wear.

(a) The all-weather coats are intended to be worn, with or without the liner, in cold or inclement weather. All members may wear the appropriate coat with the Class A or B black or Army green service uniform.

- (b) The coat will be worn buttoned except for the neck closure, which may be worn open or closed.
- (c) Female coats are buttoned and belted from the opposite direction. Females may wear the male coat.
- (d) Nonsubdued insignia of grade and CA device shall be worn on the shoulder loops of the coat.
- (e) Personnel may wear the coat without insignia when wearing civilian clothing or the CMU.

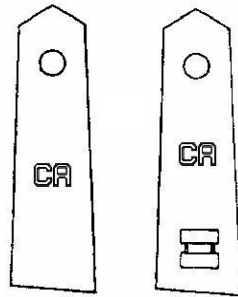


Figure 9-1: "CA" Insignia modification on army cardigan sweaters, windbreakers, and coats

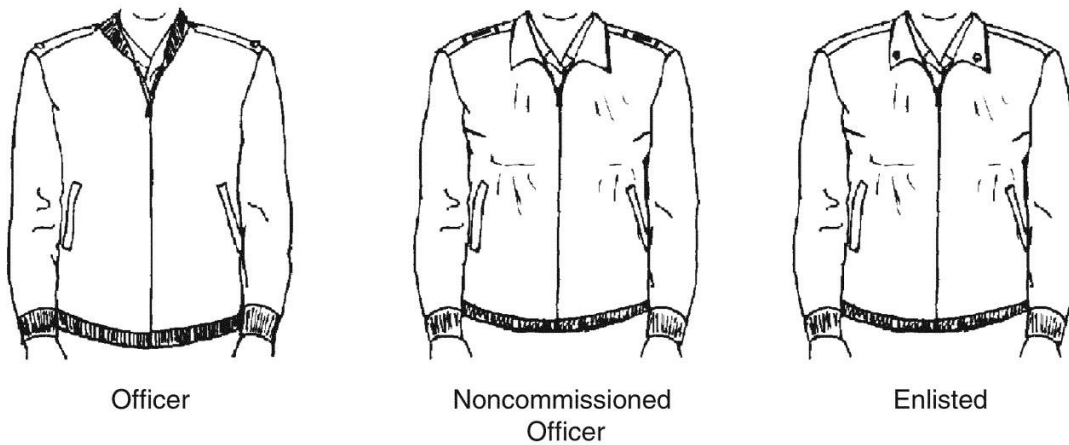


Figure 9-2. Windbreaker, black

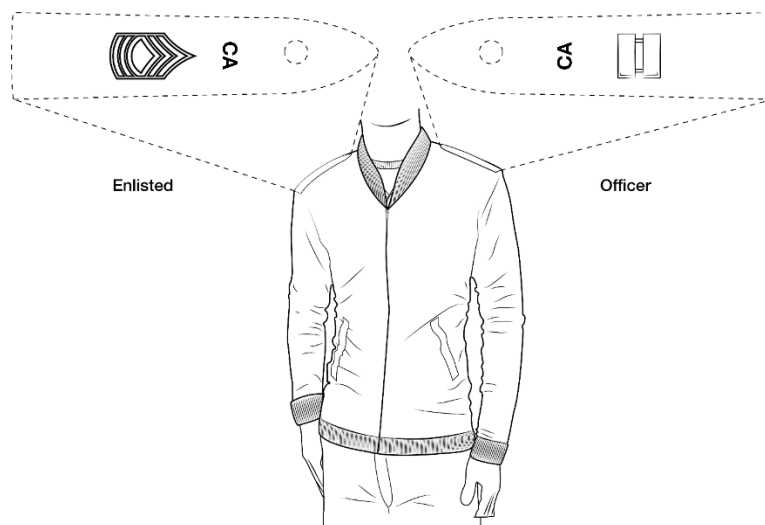


Figure 9-3. Windbreaker, heritage green

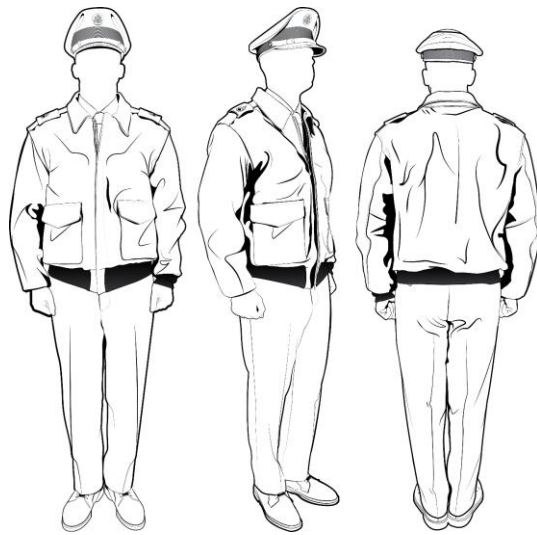


Figure 9-4. AGSU 'Bomber' Jacket

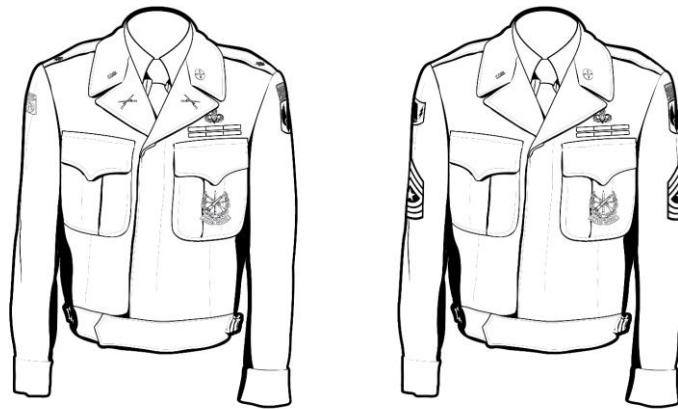


Figure 9-5. AGSU 'Ike' Jacket

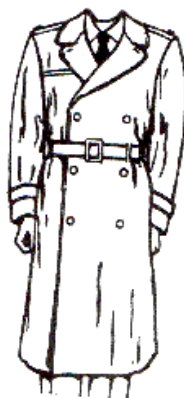


Figure 9-6. All-weather coat, black or heritage green

9-5. Neck tabs, female.

a. Neck tab, black, service.

(1) Issue. Provided by the HQCACC as an item of issue.

(2) Specifications. The material is polyester and cotton, pre-cured durable press, plain-weave poplin, in an inverted V-shape, in Army shade 305. The neck tab wraps around the neck under the collar of the female white long- and short-sleeved

uniform shirt, and fastens to itself with a Velcro hook-and-pile fastener. The neck tab design is one of overlapping tabs forming an angle.

(3) Manner of wear. The black service neck tab may be worn by female adult members, in lieu of the necktie, with all classes of the commandant service uniform that require a form of neckwear.

b. Neck tab, black, dress.

(1) Issue. An authorized, optional purchase item not provided by the HQCACC.

(2) Specifications. The material is polyester and cotton broadcloth, in Army shade 305. It is a quarter-moon neck tab, which fits under the collar of the white uniform dress shirt and CACC Blue Mess Uniform.

(3) Manner of wear. The wear of the black dress neck tab with the Class A service uniform constitutes the black dress uniform. The commandant dress uniform is the equivalent of civilian “black-tie” attire.

9-6. Neckties.

a. Necktie, four-in-hand, black or heritage green, service.

(1) Issue. Black necktie provided by the HQCACC as an item of issue. Heritage green necktie is an authorized item for the CACC AGSU not provided by the HQCACC.

(2) Specifications. Standard military pattern in black or heritage green polyester and wool, with interlining. As an option, a pre-tied, snap-on necktie also is authorized.

(3) Manner of wear. Male and female adult members may wear the tie in a Windsor, half-Windsor, or four-in-hand knot with all classes of the commandant service uniform, CACC ASU, or CACC AGSU.. Use of a conservative tie tack or tie clasp is authorized. The necktie is tied so it is no shorter than 2 inches above the top of the belt buckle, and so it does not extend past the bottom of the belt buckle. The necktie is required for wear when the long-sleeved shirt is worn as an outer garment. It is also required for wear when the long- and short-sleeved shirts are worn with the black uniform or CACC AGSU coat. The necktie is optional when the long- and short-sleeved shirts are worn with the black or heritage green pullover and black cardigan sweaters.

b. Necktie, bow, black, dress.

(1) Issue. An authorized, optional purchase item not provided by the HQCACC.

(2) Specifications. The material is black silk or satin of a commercial design, without stripes or figures. The bow has square ends not more than 2-1/2” wide.

(3) Manner of wear. Male members may wear the black bow tie with the Class A commandant service uniform at events occurring after retreat, which shall constitute the commandant dress uniform. On such occasions, full size medals may be worn in lieu of ribbons. The commandant dress uniform is the equivalent of civilian “black-tie” attire.

9-7. Shoes.

a. Shoes, oxford, black or walnut brown, male.

(1) Black or walnut brown oxford shoes are the standard footwear authorized for wear by all male and female adult members with all service and dress uniforms, brown with the CACC AGSU, black with all other service and dress uniforms.

(2) Issue. An authorized item not provided by the HQCACC.

(3) Specifications. The shoes are made from an approved specification or pattern or from a similar commercial design, and are made of leather, poromeric, or patent leather. The shoe is a dress tie-oxford style, with at least three eyelets, and a closed toe and heel. The shoe is plain, with no designs in the shoe material.

b. Shoes, oxford, black or walnut brown, female.

(1) Black or walnut brown oxford shoes are optional footwear authorized for wear by female adult members with all service and dress uniforms, brown for the CACC AGSU, black for all other service and dress uniforms.

(2) Issue. An authorized item not provided by the HQCACC.

(3) Specifications. The shoes are made from an approved specification or pattern or from a similar commercial design, and are made of leather, poromeric, or patent leather. The shoe is a dress tie-oxford style, with at least three eyelets, and a closed toe and heel, with the heel no higher than 2 inches. The shoe is plain, with no designs in the shoe material.

c. Shoes, pumps, black or walnut brown, female.

(1) Black or walnut brown service pumps are optional footwear authorized for wear by female adult members with all service and dress uniforms, brown for the CACC AGSU, black for all other service and dress uniforms.

(2) Issue. An authorized item not provided by the HQCACC.

(3) Specifications. The pumps are of a commercial design in fine grain leather, poromeric, or patent leather. The pumps are untrimmed, with a closed toe and heel. The heel must be at least 1/2 inch, but no more than 3 inches. The sole thickness will not exceed 1/2 inch.

9-8. Socks.

a. Socks, cushion sole.

(1) Issue. An authorized item not provided by the HQCACC.

(2) Specifications. The socks are stretch type, black calf-length with a cushion sole. The socks may be tan, green, or black.

(3) Manner of wear. Cushion sole socks shall be worn by all members when wearing boots.

b. Socks, dress black or heritage green.

(1) Issue. An authorized item not provided by the HQCACC.

(2) Specifications. Calf-length, black polyester or polyester/nylon, plain rib, of approved design.

(3) Manner of wear. Black dress socks shall be worn with the black dress shoes. Heritage green dress socks will be worn with the CACC AGSU brown shoes.

c. Stockings, sheer.

(1) Issue. An authorized item not provided by the HQCACC.

(2) Specifications. The stockings are sheer or semi-sheer, without seams, and of tones complementary to the wearer's skin tone and to the uniform. No patterned or pastel stockings are authorized while in uniform.

(3) Manner of wear. Stockings will be worn with all female service uniforms (with black dress socks an option when pants are worn). They may not be worn with utility uniforms. When worn with the slacks, the stockings must be at least calf length. When worn with the optional skirt, the stockings must cover all visible portions of the legs.

9-9. Sweaters, black US Army Cardigan or Pullover.

a. Cardigan, black, unisex.

(1) Issue. An authorized, optional purchase item not provided by the HQCACC.

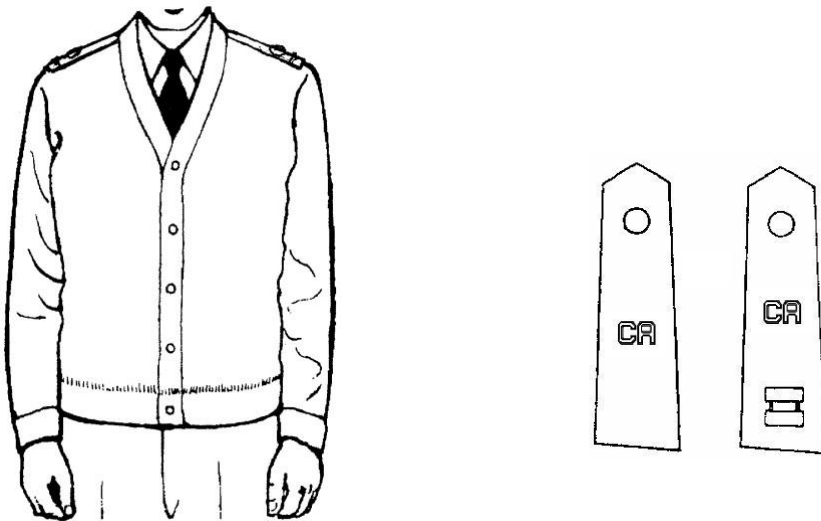


Figure 9-7 US Army Cardigan Sweater

CACC DUI (see section 10-7) &
MAROON NAME PLATE (see
section 10-11)

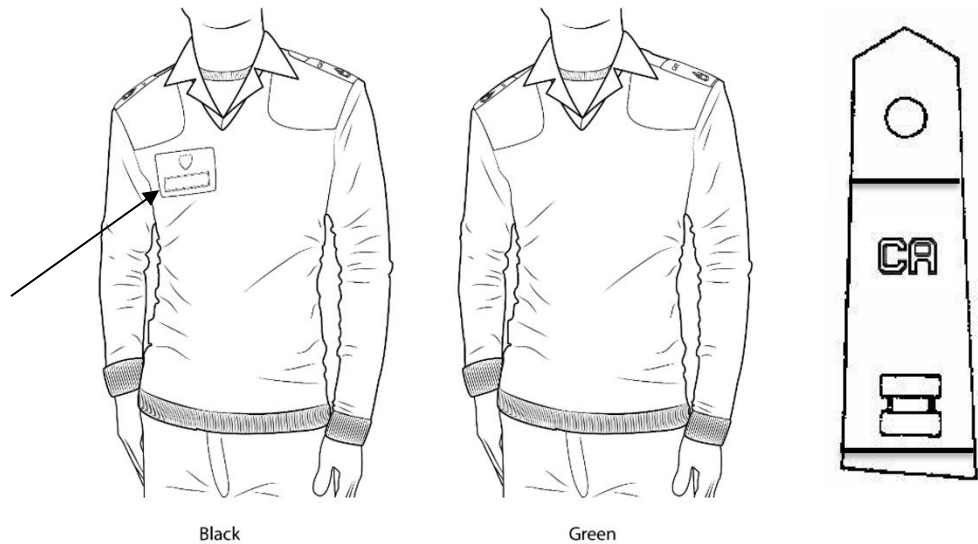


Figure 9-8 US Army Pullover Sweater

9-10. Undershirts.

- a. Issue.* An authorized item not provided by the HQCACC.
- b. Specifications.* White or tan (shade 499) cotton or cotton/polyester knit undershirt with quarter sleeves and round (crew-neck) collar.
- c. Manner of wear.* The undershirt will be worn under all uniform shirts, including the commandant service uniform. A tan undershirt will be worn under the ACU blouse IAW DA PAM 670-1.
- d.* When wearing the male or unisex version of the CACC ASU, CACC BMU, or CSU members will wear a crewneck collared white undershirt.
- e.* When wearing the female version of the CACC ASU, CACC BMU, or CSU members will not wear a crewneck collared white shirt, but rather a V-neck style undershirt or other suitable undershirt which is not readily apparent.
- f.* An undershirt is optional with the CMU. If one is worn, it must be white, black, sand, or tan in color.
- g.* When the Cadet Utility Uniform is worn by a member, it shall be worn with a black crewneck collared shirt (either without logo, or with CACC logos).

Chapter 10

Wear of Insignia and Accoutrements

10-1. General.

This chapter lists, in alphabetical order, most uniform accessories referenced in the individual uniform chapters.

10-2. Eureka Buttons.

- a. Issue. Provided by the HQCACC as an item of issue.
- b. Specifications. Gold, dome shaped, with a detailed image of the State of California 'Eureka' Seal as shown in Figure 10-1. Buttons come in 15mm (coat pocket, male; epaulets; service cap;), 19mm (coat pocket, female), and 23mm (coat, unisex) sizes.



Figure 10-1: Eureka Buttons

10-3. Grade insignia for commissioned and warrant officers.

- a. Issue. Not provided by the HQCACC as an item of issue.
- b. Specifications.
 - (1) Metal pin-on grade insignia. All metal pin-on grade insignia shall be Army style and full color when worn with service uniforms and subdued when worn with utility uniforms.
 - (2) Shoulder marks. All shoulder marks are US Army style constructed of black material with embroidered grade insignia. Shoulder mark grade insignia shall consist of appropriate color grade insignia embroidered 5/8 inch from the lower end of the shoulder mark.
- c. Manner of wear.
 - (1) Metal pin-on grade insignia.
 - (a) Full color insignia of grade will always be worn shined and polished.
 - (b) On the commandant service uniform coat, white uniform shirt, heritage tan uniform shirt, black windbreaker, black all weather coats, and sweaters, commissioned officer insignia of grade is worn on the shoulder loops, 5/8 inch from the outside shoulder seam, and centered front to back.
 - (c) Metal pin-on grade insignia is also worn on headgear as described in chapter 8.
 - (2) Shoulder marks. On the white uniform shirt (Class A or B), black windbreaker, black all weather coat, and sweaters, shoulder marks may be worn in lieu of metal-pin-on insignia.

10-4. Grade insignia for enlisted personnel.

- a. Issue. Not provided by the HQCACC as an item of issue.
- b. Specifications.
 - (1) Metal pin-on grade insignia. All metal pin-on grade insignia shall be full color when worn on the service uniform. Enlisted and non-commissioned officers' insignia shall be polished brass, pin-on grade insignia, identical in design to U.S. Army enlisted grade insignia (see DA PAM 670-1).
 - (2) Shoulder marks. All shoulder marks are constructed of black material with embroidered grade insignia identical to that of the US Army.
 - (3) Sleeve. All sleeve insignia for enlisted and non-commissioned officer CACC adults are constructed of black material with embroidered grade insignia identical to that of the US Army.

c. Manner of wear.

(1) Metal pin-on grade insignia.

(a) Full color insignia of grade will always be worn shined and polished.

(b) On the utility coat, Velcro subdued ACU rank will be affixed IAW DA PAM 670-1.

(2) Shoulder marks. Worn on the white uniform shirt, black windbreaker, black all-weather coat, and sweaters IAW DA PAM 670-1.

(3) Sleeve. All sleeve insignia for enlisted and non-commissioned officer CACC adults are worn in the same manner as identified in DA PAM 670-1 for enlisted personnel on the Army Service Uniform or Army Green Service Uniform.

10-5. Insignia, Branch, Commandant, California Cadet Corps.

a. Background.

(1) This insignia represents the California Cadet Corps as an organization.

(2) Similar in function to the U.S. Army branch collar insignia.

b. Issue. Provided by the HQCACC as an item of issue.

c. Specifications. Crossed swords on the torch of learning surrounded by a laurel wreath with a California Grizzly Bear, in gold colored metal.

d. Manner of wear.

(1) On the commandant service uniform coat, the CACC AGU service uniform coat, and the Ike jacket for commissioned and warrant officers, the commandant branch insignia will be worn centered on both lapels, 1-1/4 inches below the CA insignia. The branch insignia is positioned so that the centerline of the insignia bisects the centerline of the CA insignia and is parallel to the inside edge of the lapel (see fig 10-5).

(2) On the commandant service uniform coat, the CACC AGU service uniform coat, and the Ike jacket for enlisted personnel, the commandant branch insignia will be worn centered on the left collar, 1 inch from the notch. (see fig 10-5).

(3) On the white uniform shirt, no insignia is worn on either collar at any time.

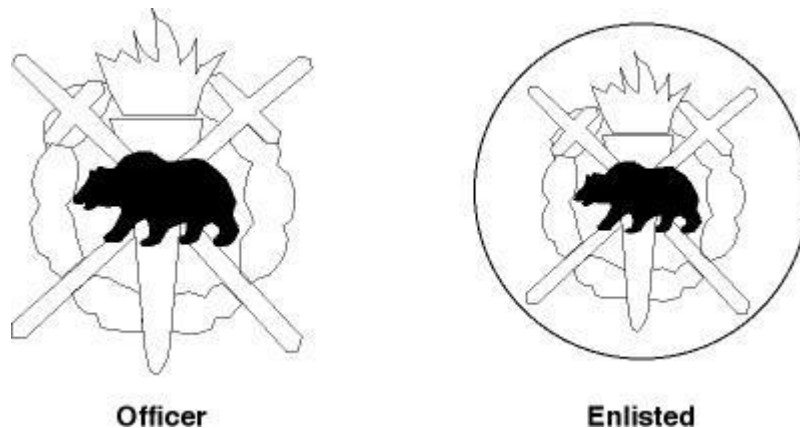


Figure 10-2 Commandant Branch Insignia

10-6. Insignia, CA.

a. Background.

(1) This insignia represents the State of California.

(2) Similar in function to the U.S. lapel insignia worn by the U.S. Army and U.S. Air Force.

(3) Commonly referred to as the CA Insignia.

b. Issue. Provided by the HQCACC as an item of issue.

c. Specifications. Beveled edge, all capital letters "CA", in gold colored metal.

(1) All officers. The CA insignia consists of the block letters, "CA" in gold-colored metal, 7/16 inch in height, without periods following the letters (see fig 10-3).



Figure 10-3. CA Insignia, Officer

(2) Enlisted personnel. The enlisted CA insignia consists of the block letters “CA” in gold-colored metal, 7/16 inch in height, without periods following each letter. The “CA” is placed on a 1 -inch diameter disk in gold-colored metal (see fig 10-4).



Figure 10-4. CA Insignia, Enlisted

d. Manner of wear. The word “lapel” is used when referring to the fold of the front of the coat that is a continuation of the collar, and which usually is separated by a notch in the collar.

(1) The CA insignia will always be worn shined and polished.

(2) On the black or heritage green uniform coat of commissioned and warrant officers, the CA insignia will be worn 5/8 inch above the notch on both collars, with the centerline of the insignia bisecting the notch and parallel to the inside edge of the lapel. Enlisted personnel wear the “CA” on the right collar and the enlisted commandant branch insignia on the left collar, 1 inch from the notch. See Figure 10-5.

(3) On the white uniform shirt, no insignia is worn on either collar at any time.

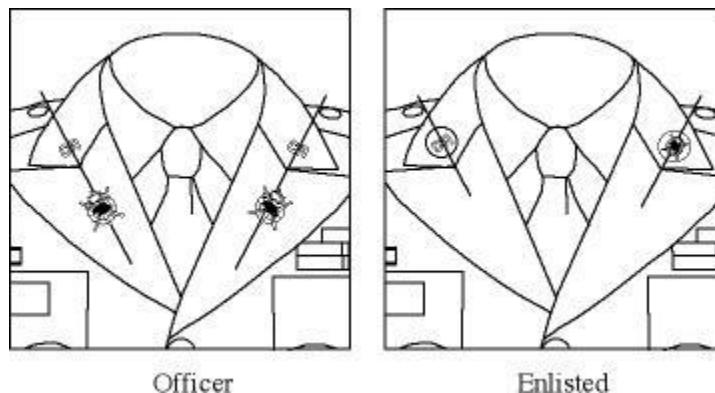


Figure 10-5: Wear of insignia on the Class A coat and Ike Jacket

10-7. Insignia, distinctive unit (DUI)

a. Background.

(1) This insignia represents the California Cadet Corps as a unit.

(2) Similar in function to the distinctive unit insignia worn by units of the U.S. Army.

(3) Commonly referred to by its abbreviation, DUI.

b. Issue. Provided by the HQCACC as an item of issue.

c. Specifications. A miniature metal reproduction of the California Cadet Corps crest with bear, torch and sword in gold on a blue field.

d. Manner of wear.

(1) Adult CACC members will wear the DUI on both the commandant service uniform coat, pullover sweater, and the white shirt. The DUI will be worn centered one-eighth inch above the maroon name tag. It is also worn on the beret flash and epaulettes of the CSU Class A coat by enlisted adult members. Members with prior US military regimental affiliation may wear that RDI in lieu of the CACC DUI solely on the chest of uniforms.



Figure 10-6. Distinctive Unit Insignia, California Cadet Corps

10-8. Patch, California Cadet Corps.

a. Issue. May be provided by the HQCACC as an item of issue.

b. Specifications. An embroidered reproduction of the California Cadet Corps crest with bear, torch and sword in gold on a blue field. The words “CALIFORNIA CADET CORPS” will appear across the top of the patch.

c. Manner of wear.

(1) The patch will be worn on the left sleeve of the CSU black uniform coat, and an ACU subdued color version of the patch on the ACU coat.

(2) The patch will be worn 1/2 inch below the shoulder seam on the service uniform, centered on and in a straight line with the shoulder loop (or shoulder seam on the utility uniform) and attached with Velcro to the left shoulder pocket of the CACC ACU centered top to bottom and left to right. The similar patch designed for the Cadet Utility Uniform will not be worn by adults.



Figure 10-7. California Cadet Corps Organizational Patch

10-9. California Flag Patch

a. Issue. Provided by the HQCACC as an item of issue.

b. Specifications. An embroidered reproduction of the California State Flag. May have either a white or gold border.

c. How worn.

(1) The patch will be worn, affixed by Velcro, centered on the upper portion of the right sleeve pocket of the commandant utility uniform coat.



Figure 10-8. California Flag Patch

10-10. Patch, Unit.

- a. Issue. An authorized item not provided by the HQCACC.
- b. Specifications. An embroidered patch specifically designed for and by an individual unit (battalion or larger). Unit patch designs must be approved by the HQCACC prior to adoption.
- c. Manner of wear.
 - (1) A unit patch may be worn on the right sleeve of the ACU coat in the bottom pocket space.
 - (2) Members who have prior combat service are authorized to wear their Shoulder Sleeve Insignia – Military Operations in Hostile Conditions (SSI-MOHC - combat patch) in lieu of their cadet unit patch on the CACC AGSU, CSU, and utility uniforms.
 - (3) The patch may be worn 1/2 inch below the right shoulder seam of the CACC AGSU and CSU coat and the Ike jacket, centered on and in a straight line with the shoulder loop.
 - (4) Members who wear the SSI-MOHC on the CSU will not wear the Combat ID Badge.

10-11. Nameplates and Nametapes.

- a. Nameplates.
 - (1) Issue. An authorized item not provided by the HQCACC.
 - (2) Specifications. The nameplate is a U.S. Army-style, maroon, laminated plastic plate, 1 inch by 3 inches, 1/16-inch-thick, with a white border not to exceed 1/32 inch in width. Lettering is block type, ALL CAPS, indented white lettering, 3/16 inch in height, and centered on the plate. Only last names on line one and the words CALIFORNIA CADET CORPS on line 2 are used on the nameplates. Gloss or non-gloss finish is authorized on the nameplate. Modifications to the nameplate to add other insignia or information are prohibited.
 - (3) Manner of wear. On the service shirts, dress service coat, and black pullover sweater, the nameplate is worn centered left to right on the flap of the right breast pocket, and centered between the top of the button and the top of the pocket. (See illustrations in individual uniform chapters.). On female uniforms without pockets, the nameplate is aligned with the 2nd button from the top.
- b. Nametapes.
 - (1) Issue. An authorized item not provided by the HQCACC.
 - (2) Specifications. Consists of the organizational nametape and the individual's nametape.
 - i. The organizational nametape is embroidered with CA CADET CORPS in silver block letters on a black fabric background. See Figure 10-8.
 - ii. The individual's nametape is embroidered with the member's last name in silver block letters on a black fabric background.
 - (3) Manner of wear. The organizational nametape will be worn on the wearer's left breast pocket of the utility uniform immediately above the top of the slanted chest pocket flap and parallel to the ground. The individual's nametape will be worn similarly above the wearer's right breast pocket, and on the back of the patrol cap.
 - i. Nametapes may be affixed with Velcro or sewn on (remove the Velcro from the uniform and sew the nametapes in its place). The rank insignia must be affixed to the uniform in the same manner as the nametapes.
 - ii. The individual's nameplate on the patrol cap is worn on the back of the cap, either on the provided Velcro or sewn on. The nametape on the cap does not need to be affixed in the same manner as those on the coat.



Figure 10-8. Organizational Nametape, black and silver

10-12. CACC Status Tabs

- a. Issue. An authorized item that may or may not be provided by the HQ CACC.
- b. Specifications. The Status Tab is a U.S. Army-style tab, 2 inches long by 1 1/16 inch tall, with black lettering on a coyote brown or bagby green (hex code 91917f) background and merrowed edge border. The tab will be in an arc shape. Patches will have a Velcro hook backing. Lettering is capitalized.
- c. Manner of wear.
 - (1) Up to three tabs may be worn centered and flush over the CACC patch on the left sleeve pocket of the ACU (OCP) uniform.

(2) Order of precedence of wear is as follows, with the highest priority on top:

- (a) Survival Instructor
- (b) Commandant
- (c) Emergency Responder
- (d) Marksman
- (e) Field Expert
- (f) CERT

d. Standards for Wear. Adult members may wear the indicated tab if they meet the following standards:

(1) Survival Instructor: An adult member who has satisfactorily completed the Survival Instructor Course. May also be awarded at the discretion of the Survival Course OIC after completion of OJT during a complete iteration of the Cadet Survival Course.

(2) Commandant: Assigned as the primary Commandant for a CACC school program.

(3) Emergency Responder: Have been employed as an emergency responder for at least one year. Includes police, firefighter, EMT/Paramedic. Other jobs will be approved for wear by the CACC AXO.

(4) Marksman: Have served as a Marksmanship Instructor to a CACC Rifle Team or summer encampment and qualified with a .22 Smallbore or Air Rifle at the Marksman or higher level.

(5) Field Expert: Supervised cadets during at least three (3) overnight field training events, for a total of at least 10 nights in a field training environment (i.e. unit bivouacs, survival training, Field Skills unit at summer encampment, etc.).

(6) CERT: Have graduated CERT Training

10-13. Combat Service ID Badge

a. Issue. An authorized item not provided by the HQCACC

b. Specifications. A metal replica of an Army command patch. Approximately 2" tall by 1 ½ " wide, depending on the design.

c. Background. Commandants who have been awarded the US Army Combat Service ID Badge may wear it on the Class A and Class B Uniforms as described in DA PAM 670-1 dated 25 May 2017, para 20-17.

d. How worn.

(1) The Combat Service ID Badge is worn on the Class B shirt or Class A jacket.

(2) The Combat Service ID Badge will be worn centered between the bottom of the right pocket flap and the bottom of the pocket, and centered from left to right, or in a position even with the waist on the right side of the female blouse.

Chapter 11

Decorations, Awards, Tabs, and Medals

11-1. General.

- a. Decorations. Authorized ribbons and medals as described in CR 1-7.
- b. No decorations, medals, or other awards shall be worn on the utility uniform except those qualification or skill badges (including the MEMS badges) authorized in DA PAM 670-1 or CSG 670-1.
- c. All decorations and awards listed below may be worn on the commandant service uniform coat and white uniform shirt (when worn as an outer garment).
- d. Personnel may align awards to the left or right of the service dress uniform coat if the lapel covers up these awards. Refer to DA PAM 670-1 for details.

11-2. Decorations.

- a. Issue. Provided by the HQCACC as items of issue.
- b. Manner of wear – individual awards.
 - (1) Individual awards will be worn centered above the upper left pocket flap, with a 1/8 inch gap between the first row and the top edge of the pocket flap.
 - (2) Service ribbons are worn in order of precedence (as listed in CR 1-7, CSG 670-1, NGR 670-1, and DA PAM 670-1) from the wearer's right to left, in one or more rows, with no space between rows. No more than four ribbons are worn in any one row. Members will not start a second row unless they are authorized to wear four or more ribbons. The determination of whether three or four ribbons are worn in each row is based upon the size of the coat and the position of the lapel. The first and second rows will contain the same number of ribbons (three or four) before starting a third row. Second and subsequent rows will either contain the same number of ribbons or less than the row below. The top row is centered on the row beneath or may be aligned to the wearer's left, whichever presents the best appearance (see Fig 11-1).
 - (3) When an individual has earned ribbons from multiple organizations, they shall be worn in the following order of precedence from high to low.
 - Federal Ribbons (using the order of precedence outlined in DA PAM 670-1)
 - California National Guard Ribbons
 - California State Guard Ribbons
 - California Cadet Corps Ribbons
 - Ribbons from state defense forces other than California (does not include ribbons from the State Guard Association of the United States).
 - (4) Ribbons will be worn IAW the specifications in DA PAM 670-1, CA NGR 670-1, and CSG 670-1.
- c. Manner of wear – unit citations. Unit citations will be worn above the upper right pocket flap in the same manner as described in paragraph 10-2b.
- d. Manner of wear – qualification and skill badges.
 - (1) All qualification and skill badges, cords/aiguillettes, and tabs, including those earned in prior state or federal service and MEMS badges will be worn as specified in DA PAM 670-1 or CSG 670-1. Commissioned and Warrant officers traditionally do not wear marksmanship badges on Army uniforms. The CACC BCTA shoulder cord is no longer authorized for wear.
- e. Manner of wear – foreign qualification badges.
 - (1) Males wear foreign badges 1/8 inch above the right pocket flap or 1/2 inch above unit awards.
 - (2) Females wear foreign badges 1/2 inch above the nameplate or 1/2 inch above unit awards.
 - (3) Foreign badges are not worn on utility uniforms. Foreign badges will only be worn if at least one CACC, state, or federal award is worn.
- f. The following items are not authorized for wear on any adult CACC uniform:
 - (1) Badges, ribbons, medals, and tabs awarded by government jurisdictions lower than the state government.
 - (2) Badges, ribbons, medals, and tabs awarded by jurisdictions inferior to foreign national governments.
 - (3) Badges, ribbons, medals, and tabs awarded by civilian organizations, other than the MEMS Badge.
 - (4) Locally authorized badges, ribbons, medals, and tabs.
 - (5) Badges, ribbons, medals, and tabs of the Reserve Officer Training Corps and similar organizations.

g. Manner of wear – Combat Service Identification Badge.

(1) The Combat Service Identification Badge (CSIB) is authorized for wear on the CSU, CACC ASU, and CACC BMU dress uniforms and is to be worn IAW DA PAM 670-1 and CSG regulation 670-1.

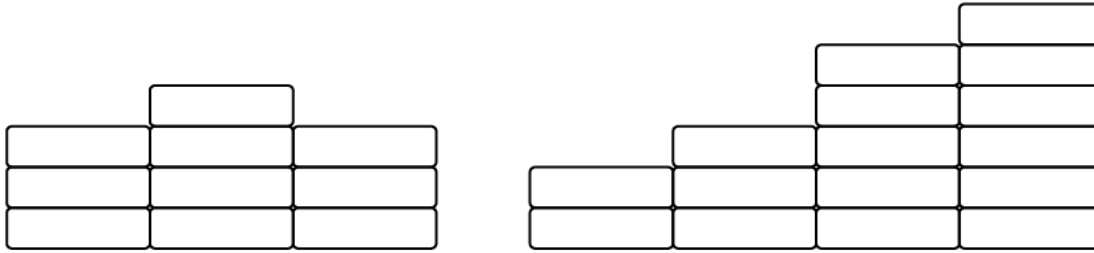


Figure 11-1: Wearing ribbons centered or aligned to the left

11-3. Medals.

a. Issue. Provided by the HQCACC as items of issue.

b. General.

(1) Full size medals may only be worn on a Class A coat (CACC AGSU, CACC ASU, or CSU) when worn at events with a bow tie after retreat. Figure 11-2.

(2) Only medals and badges authorized or issued by the HQCACC, CSG, The California National Guard, or Federal Armed Services will be worn.

(3) Additional ribbons and the medals awarded for the same honor may not be worn concurrently.

(4) Medals will be worn in order of precedence as indicated in CR 1-7. The highest decorations will be worn From top to bottom, right to left.

c. Manner of wear. Full size medals worn after retreat on a Class A coat (CACC AGSU, CACC ASU, or CSU) shall be worn IAW DA PAM 670-1 (see Fig 11-2). Miniature medals will be worn on the CACC BMU (see Fig 11-3 and 11-4).

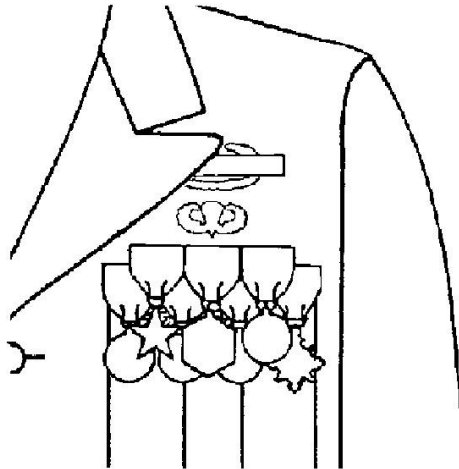


Figure 11-2: Wear of Full Size Medals on Class A

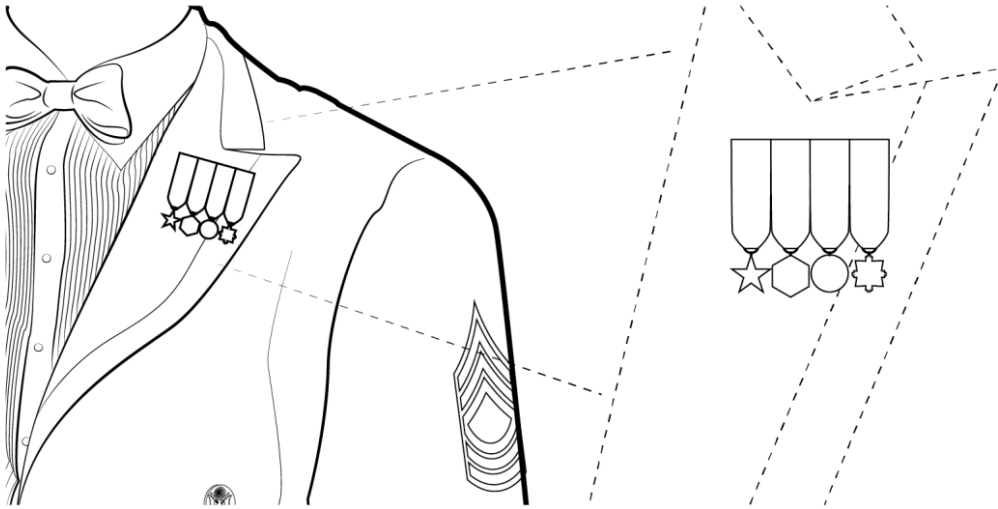


Figure 11-3: Wearing of Miniature Medals on mess uniforms, male

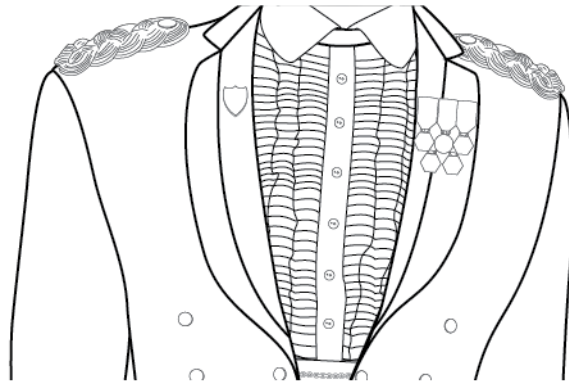


Figure 11-4: Wearing of Miniature Medals on mess uniforms, female

APPENDIX A

Body Composition Standards

Max weight by age, males (pounds)						
Height (inches)	18-24	25-30	31-40	41-50	51-60	61+
60	145	149	154	158	162	166
61	150	155	159	164	168	172
62	155	159	164	168	173	177
63	160	164	169	174	178	183
64	165	170	174	179	184	189
65	170	175	180	185	190	195
66	175	180	185	190	196	201
67	181	187	192	197	202	208
68	186	192	197	203	208	214
69	192	197	203	208	214	219
70	198	204	209	215	221	227
71	203	209	215	221	227	232
72	209	215	221	227	233	240
73	214	220	227	233	239	245
74	220	227	233	240	246	253
75	227	233	240	246	253	260
76	233	240	246	253	260	267
77	239	246	253	260	267	274
78	245	252	259	267	274	281
79	251	259	266	273	281	288
Max Body Fat %	22%	24%	26%	28%	30%	32%

Max weight by age, females (pounds)						
Height (inches)	18-24	25-30	31-40	41-50	51-60	61+
59	132	136	140	143	147	151
60	137	141	145	149	153	157
61	141	145	149	153	158	162
62	146	151	155	159	163	168
63	150	155	159	164	168	172
64	156	160	165	169	174	178
65	161	165	170	175	179	184
66	166	171	175	180	185	190
67	171	176	181	186	181	196
68	176	181	186	192	197	202
69	181	187	192	197	202	208
70	186	182	197	203	208	214
71	192	197	203	208	214	219
72	197	202	208	214	220	225
73	203	209	215	221	227	232
74	208	214	220	226	232	238
75	214	220	227	233	239	245
76	219	226	232	239	245	251
77	226	232	239	245	252	258
78	232	239	245	252	259	266
79	237	244	251	258	265	271
Max Body Fat %	32%	34%	36%	38%	40%	42%